



1010 Krebs Station Road

Paducah, KY 42003

Phone (270) 554-1146 Fax (270) 554-1170



Retail Catalog

[www.brownsplating.com](http://www.brownsplating.com)

January 1, 2008

## For Vintage Restoration Plating

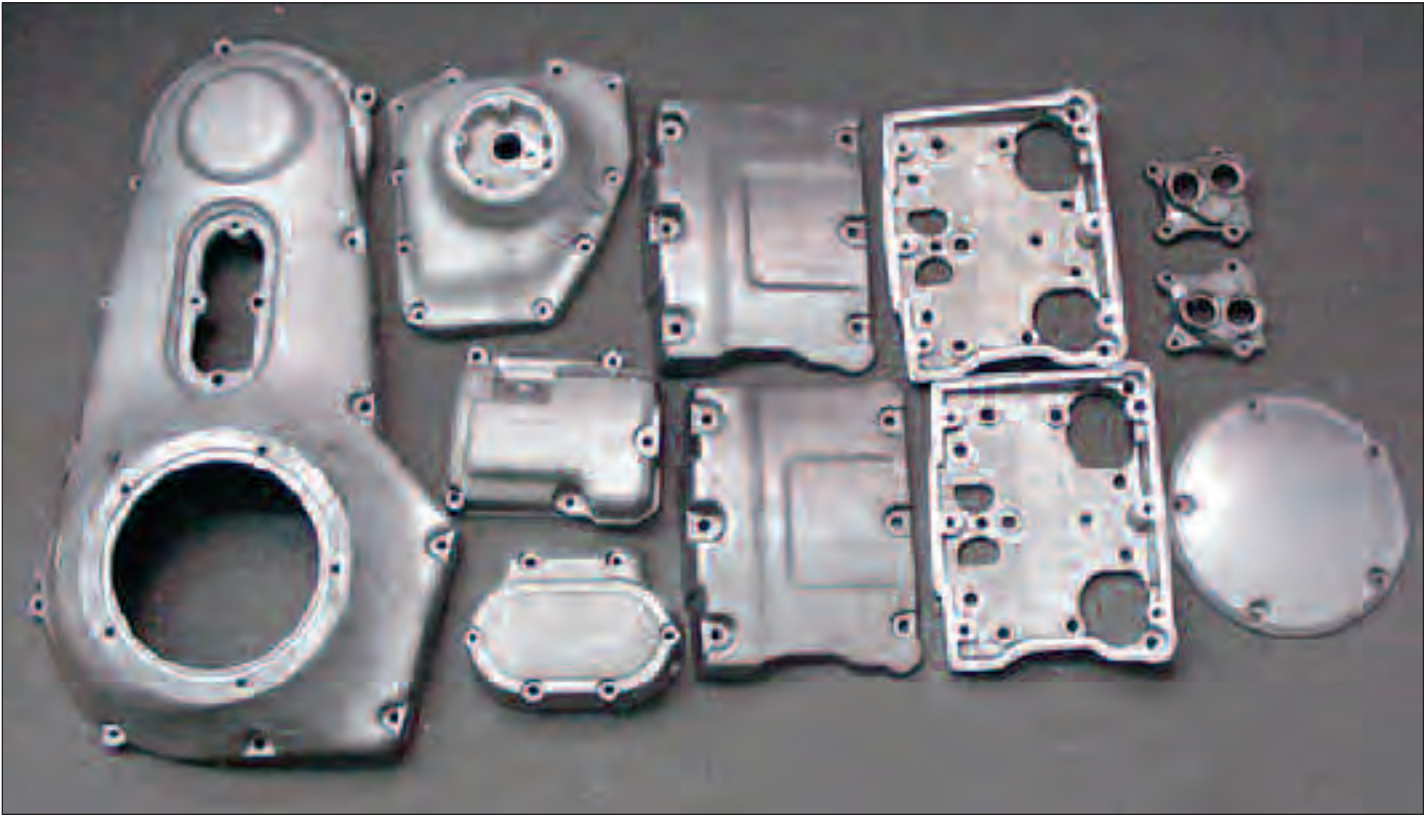


# To Custom Choppers

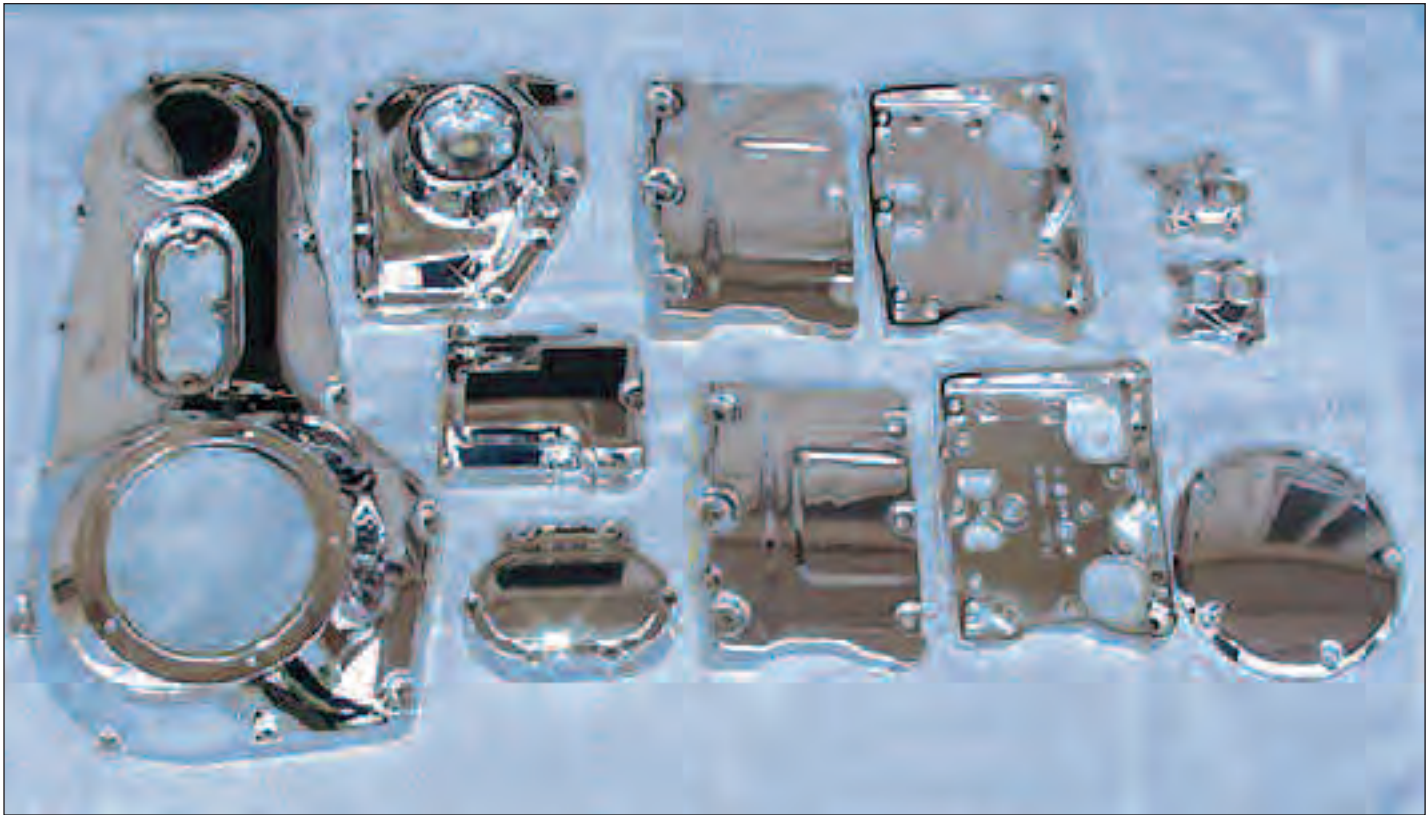


*Let Us Dress Up Your Stock Parts*

*Before*



*After*



## WELCOME TO **BROWNS PLATING**

Make your bike stand out in the crowd with show quality award winning custom chrome. We have been chrome plating parts exclusively for the bike industry since 1968. We have a 7 layer plating process unique to the plating industry. We go beyond any OEM plated part with a specially developed process giving your parts a high quality long lasting finish. We optimized this with a totally automated process that controls every process step insuring the absolute best in plating. In plating you get what you pay for. When you send your parts to us for plating you're guaranteed to get a custom plating job that's done 1st class. Our plating lasts much longer than most. We have customers that have parts that were done 20 years ago and they still look good, the only reason they return it for replating is that it has been scratched up over the years and they want a new finish.

*We have excellent customer service. You will always get a call back from us and we make every effort to resolve any problem you may have. Our billing is very consistent and we keep you informed when your order is shipped.*

Ronnie Brown

email: [ronniebrown@brownsplating.com](mailto:ronniebrown@brownsplating.com)



# Table of Contents

2.....Service

4 .....Exceptions

5.....Harley Big Twin Evolution Twin Cam V-Rod Buell

9.....Harley Sportster Evolution Buell

11.....Harley 45, Indian Chief Scout

13 .....Honda GL 1000-1500, V65

14.....Honda 750-1100, CBX

15 .....Honda 500, 550, 650

17.....Honda 350-450, Yamaha & Suzuki

17 .....Suzuki 550, 750, 850, 1000, 1100

18.....Yamaha 650, 750, 850, 1100 Stars

20 .....Kawasaki 650, 900, 1000, 1300

21.....BMW, BSA, Norton, Triumph

22 .....Polaris/Victory

23.....T-Shirts

24.....Packing Lists



## Chrome Plating Services

We can chrome just about anything that goes on a motorcycle. The only type of parts we don't do are parts made of plastic or magnesium. We also don't do any type of motorcycle frames or wheels. Our company does plating exclusively for the motorcycle industry. Our focus over the past 30 years has always been in the motorcycle industry. We know what areas to polish and what areas to mask so you can get a perfect plating job on your parts. Most of our employees have been with us for 20+ years and they are very knowledgeable in the plating and polishing industry.

<b>Chrome Plating</b>	"Unique 7 layer process for the best in chrome plating"
<b>Nickel Plating</b>	"Nickel plating for restoration projects and alternative to chrome plating finish"
<b>Satin Nickel Plating</b>	Restorations and alternative finish for old school scoots
<b>Copper Plating</b>	"Bright copper finish for alternative look"
<b>Polish Only</b>	Bright polished finish
<b>Strip &amp; Sand Blast</b>	"Ready for paint or other finishes"
<b>Strip Only</b>	

## Polishing Services

We offer our polish only service on almost all parts on the motorcycle with the exception of motorcycle frames and wheels. Our polish only services requires more time on each part along with more supplies therefore, the polish only service is the same price as the suggested retail on chrome plating.

## Strip Only Items

The cost of strip only parts is 50% of the chrome cost. Please list the parts as strip only or mark the parts themselves.

## In Shop Time

Our in shop time from May - November takes 3-5 days. From December - May, the in shop time will gradually go up and may go as high as 3 weeks or more depending on our work load.

## Rush Service

We offer a rush service during our busy season which is December - May. The cost is \$75.00 - \$150.00 per box depending on the size of the order. You will need to notify us in advance with the job #. The rush service order normally take 2-4 days in house. If the request is made on an order already in house there will be an additional charge to locate the order and get it expedited.



## Payment

---

On your 1st order we will require a 50% deposit on the order before we start processing it. After opening the box we will contact you with a quote and at the time will request a credit card or debit card for the deposit. After your 1st order we will no longer require the deposit in advance. You will be billed for the order on the day it is completed and shipped. We prefer payment in the form of a credit or debit card. The cards we accept are American Express, Master Card and Visa. The other payment option is COD. COD's must be paid with a cashiers check, money order or certified funds unless you have been approved for company check in advance.

## Shipping

---

All orders will be shipped to you by UPS. As a general rule all orders are shipped back ground service unless they come in to us air. For example, if we receive the box in next day air, it will be shipped back to you UPS next day air unless otherwise specified.

## Disassembly Prior To Shipping

---

Please fully disassemble all parts prior to shipping to us. This means all mechanical working parts such as bearings, seals, brake pistons, etc. need to be removed. If we have to disassemble the parts for you we will have to charge you a service rate of \$50 for each part that has to be disassembled.

## Cracked/Damaged Parts

---

All parts sent in with any type of (other than shipping damage) damage will be returned undone unless they are accompanied with a written ok to do as is.

## Warranty/Pitted Parts

---

Brown's will cover cost of plating for one year after date of process, this does not include any disassembly or assembly cost, or freight inbound, we will cover outgoing freight only, parts will be inspected and at our discretion we will decide if a warranty claim will be given. Any misused parts will not be covered under the warranty.

### Pitted Parts

Brown's will put forth every effort to make your part as pit free as possible, however, if you decide that we have not done it to your liking, you can return it, but there will be a service charge for the extra handling and time spent to make it better. Normal charge is from \$50.00 to \$75.00 dollars extra. We will put more time and effort into it, but that still will not guarantee the part will be flawless.

## Shipment Notification

---

We will notify you by fax or email the day your order is shipped. The notification will have a detailed invoice attached with UPS tracking number.



Exceptions:

The parts listed below carry a 90 day limited warranty.

- Steel or Aluminum Rim
  - Softail Swingarm
  - Sport Bike Swingarm (aluminum)
- 

We no longer polish or plate any of the parts listed below.

- Frame
- Any type of Mag Wheel



## Harley Big Twin Evolution Twin Cam V-Rod Buell

ITEM	RETAIL	ITEM	RETAIL
ADJUST BOLT	\$12.00	CALIPER	\$126.00
AIR BOX COVER V-ROD	\$506.00	CALIPER FRONT 2 PC	\$117.00
AIR SCOOP	\$122.00	CALIPER REAR	\$126.00
AIR TANK	\$239.00	CALIPER REAR 2 PC	\$153.00
AIR TOP FITTING	\$43.00	CALIPER 2PC R W/MNT(RR)2000	\$231.00
ALTERNATOR COVER V-ROD	\$153.00	CALIPER BRACKET SMALL	\$28.00
AXLE	\$32.00	CALIPER COVER	\$103.00
AXLE & NUT	\$47.00	CALIPER FRONT (REM RING)	\$143.00
AXLE END CAP	\$28.00	CALIPER FRONT 2 PC 2000	\$153.00
AXLE END CAP LARGE	\$32.00	CALIPER MOUNT	\$74.00
BAG MOUNT	\$165.00	CALIPER MOUNT ALUM	\$132.00
BAG MOUNT BRACKET	\$38.00	CALIPER MOUNT ALUM DYNA	\$132.00
BAG RAIL	\$103.00	CALIPER REAR (REM RING)	\$143.00
BATTERY BASE PLATE	\$103.00	CALIPER RR 2PC W/MOUNT 2000	\$215.00
BATTERY BOX	\$103.00	CAM COVER 2 PC V-ROD	\$171.00
BATTERY SIDE COVER	\$103.00	CAM COVER FINNED	\$132.00
BATTERY SIDE COVER V-ROD	\$103.00	CARBURETOR ARM ALUM	\$32.00
BATTERY STRAP	\$51.00	CARBURETOR ARM STEEL	\$28.00
BATTERY TOP	\$65.00	CARBURETOR BACKING PLATE	\$74.00
BEARING CUP	\$28.00	CARBURETOR BODY	\$190.00
BELT COVER 2 PC	\$203.00	CARBURETOR BOWL	\$65.00
BELT GUARD	\$122.00	CARBURETOR BRACE	\$47.00
BELT GUARD LOWER	\$100.00	CARBURETOR BRACKET LARGE	\$74.00
BLEEDER	\$9.00	CARBURETOR LEVER	\$32.00
BLINKER HOUSE	\$55.00	CARBURETOR TOP	\$38.00
BLINKER MOUNT	\$9.00	CENTER STAND	\$190.00
BLINKER RING	\$28.00	CHAIN ADJUST	\$43.00
BLOCK	\$28.00	CHAIN ADJUST END PLATE	\$19.00
BOLT	\$12.00	CHAIN GUARD	\$135.00
BRACKET	\$74.00	CHAIN GUARD BRACKET	\$47.00
BRACKET LARGE	\$153.00	CHAIN GUARD FLH	\$158.00
BRACKET SMALL	\$32.00	CHAIN GUARD V-ROD	\$190.00
BRAKE ARM	\$38.00	CHAIN HOUSE 2 PC	\$239.00
BRAKE BACKING PLATE ALUM	\$126.00	CHOKE BRACKET	\$32.00
BRAKE BACKING PLATE STEEL	\$103.00	CHOKE CABLE	\$32.00
BRAKE DRUM ALUM	\$190.00	CHOKE KNOB	\$19.00
BRAKE DRUM STEEL	\$122.00	CHOKE LEVER	\$38.00
BRAKE LINE	\$74.00	CHOKE TUBE	\$32.00
BRAKE PEDAL	\$74.00	CHOKE TUBE BRACKET	\$32.00
BRAKE PEDAL LARGE	\$103.00	CLAMP LARGE	\$47.00
BRAKE PEDAL WG	\$103.00	CLUTCH ARM	\$65.00
BRAKE PEDAL ALUM	\$103.00	CLUTCH ARM LARGE	\$74.00
BRAKE PEDAL ALUM V-ROD	\$103.00	CLUTCH COVER V-ROD	\$205.00
BRAKE PEDAL COVER 2PC PRO 1	\$89.00	CLUTCH DOME	\$89.00
BRAKE PEDAL MOUNT	\$74.00	CLUTCH DOME LARGE	\$103.00
BRAKE PEDAL MOUNT LARGE	\$103.00	CLUTCH HUB	\$153.00
BRAKE PEDAL MOUNT 2000 ST S	\$153.00	CLUTCH MASTER 11/16 02	\$103.00
BRAKE PEDAL MOUNT 2PC O3 DY	\$89.00	CLUTCH PEDAL	\$103.00
BRAKE PEDAL MOUNT DYNA	\$103.00	CLUTCH PEDAL MOUNT	\$103.00
BRAKE PEDAL MOUNT SOFTAIL	\$153.00	CLUTCH PERCH	\$32.00
BRAKE PEDAL MOUNT ST 2000	\$165.00	CLUTCH PERCH CLAMP	\$32.00
BRAKE PEDAL PAD 2 PC	\$38.00	CLUTCH PLATE ALUM	\$89.00
BRAKE PEDAL STOP	\$32.00	CLUTCH PLATE SMALL	\$51.00
BRAKE ROD	\$65.00	CLUTCH ROD	\$55.00
BRAKE ROD DYNA	\$74.00	CLUTCH SPRING	\$19.00
BREATHER BACKING PLATE	\$89.00	COIL BRACKET	\$74.00
BREATHER CAN 2 PC	\$74.00	COIL BRACKET 2 PC	\$74.00
BREATHER COVER	\$103.00	COIL COVER	\$55.00
BREATHER COVER LARGE	\$132.00	COLLECTOR	\$317.00
BREATHER COVER NESS	\$126.00	COLLECTOR END	\$55.00
BREATHER COVER BRACKET	\$32.00	COUNTER SHAFT	\$55.00
BREATHER COVER BRACKET LARG	\$74.00	CRASH BAR	\$317.00
BREATHER COVER INSERT	\$65.00	CRASH BAR LARGE	\$397.00
BUELL FORK BOTTOM	\$113.00	CRASH BAR SMALL	\$153.00
BUMPER	\$120.00	CRASH BAR SMALL W/BATTERY B	\$258.00
BUMPER LARGE	\$190.00	CURVED WASHER	\$19.00
C B BRACKET	\$49.00	CYLINDER	\$239.00
C B SPACER	\$12.00	CYLINDER TWIN CAM	\$350.00
CABLE	\$74.00	D RING	\$74.00
CABLE HOLDER	\$19.00	D RING THICK	\$103.00



## Harley Big Twin Evolution Twin Cam V-Rod Buell, continued

ITEM	RETAIL	ITEM	RETAIL
DAMPER	\$28.00	HANDLEBAR COVER FLHR	\$89.00
DAMPER KNOB	\$32.00	HANDLEBAR COVER V-ROD	\$89.00
DAMPER KNOB COVER	\$28.00	HANDLEBAR FAT BARS	\$203.00
DAMPER ROD	\$28.00	HANDLEBAR PART	\$32.00
DERBY COVER	\$55.00	HANDLEBAR PART 98	\$32.00
DIP STICK	\$32.00	HANDLEBAR PC	\$100.00
DISC	\$153.00	HANDLEBAR SLEEVE	\$47.00
DISC 2000	\$153.00	H-D EMBLEM LARGE	\$89.00
DISC CENTER	\$81.00	HEAD	\$239.00
DISC V-ROD	\$153.00	HEAD NUT	\$19.00
DISTRIBUTOR BAND	\$28.00	HEAD WASHER	\$9.00
DISTRIBUTOR BASE	\$55.00	HEADLIGHT MOUNT	\$74.00
DISTRIBUTOR CLIP	\$19.00	HEADLIGHT MOUNT SMALL	\$38.00
DISTRIBUTOR CUP	\$43.00	HEADLIGHT MOUNT V-ROD	\$90.00
DISTRIBUTOR TOP	\$32.00	HEADLIGHT RIM	\$55.00
DRIVE CHAIN	\$153.00	HEADLIGHT RING ALLOY	\$74.00
DUST COVER	\$12.00	HEADLIGHT SHELL	\$113.00
DUST COVER LARGE	\$32.00	HEADLIGHT SHELL SMALL	\$103.00
EMBLEM	\$74.00	HEADLIGHT SHELL ALUM	\$116.00
END	\$19.00	HEADLIGHT SHROUD	\$153.00
ENGINE SKID PLATE	\$103.00	HEADLIGHT SHROUD LARGE	\$304.00
EXHAUST FLANGE	\$38.00	HEADLIGHT SHROUD FLHR	\$165.00
EXHAUST PIPE (PER FOOT)	\$65.00	HEADLIGHT VISOR	\$65.00
EXHAUST TIP	\$65.00	HEAT GUARD	\$74.00
EXTENSION BOLT	\$19.00	HEEL TOE SHIFTER	\$65.00
FAIRING MOUNT 2 PC	\$74.00	HI WAY BAR LARGE	\$153.00
FENDER	\$252.00	HOLD DOWN	\$12.00
FENDER LARGE	\$317.00	HOLD DOWN LARGE	\$19.00
FENDER REAR	\$379.00	HORN	\$103.00
FENDER BRACE	\$103.00	HORN BRACKET	\$38.00
FENDER FRONT V-ROD	\$261.00	HORN BRACKET LARGE	\$65.00
FENDER HINGE 2 PC	\$74.00	HORN COVER	\$55.00
FENDER REAR V-ROD	\$317.00	HOUSE LARGE	\$103.00
FENDER STRUT	\$132.00	HUB	\$100.00
FENDER STRUT ALUM	\$117.00	HUB ALUM	\$122.00
FENDER STRUT SOFTAIL	\$153.00	HUB REAR	\$100.00
FENDER TIP	\$74.00	HUB REAR W/FLANGE	\$103.00
FINNED PAN	\$153.00	HUB ALUM FRONT 98 W/FLANGE	\$153.00
FOOTBOARD	\$82.00	HUB FRONT ALUM 97	\$153.00
FOOTBOARD MOUNT	\$89.00	HUB REAR ALUM 97	\$153.00
FOOTBOARD MOUNT MEDIUM	\$65.00	HUB SPACER LARGE	\$74.00
FOOTPEG	\$55.00	HYPERCHARGER SCREEN	\$43.00
FOOTPEG MOUNT	\$38.00	INNER PRIMARY COVER	\$267.00
FOOTPEG MOUNT LARGE	\$74.00	INNER PRIMARY COVER CAST	\$317.00
FOOTPEG MOUNT REAR	\$103.00	INNER PRIMARY COVER TIN	\$173.00
FOOTPEG STUD	\$28.00	INNER PRIMARY COVER ST	\$267.00
FORK BRACE	\$135.00	INSPECTION PLATE	\$51.00
FORK COVER	\$74.00	INSTRUMENT RING	\$103.00
FORK TUBE	\$190.00	INVERTED FORK TUBE	\$190.00
FRONT DRIVE PULLEY	\$103.00	INVERTED FORK UPPER	\$190.00
GAS CAP	\$65.00	J HOLDER	\$47.00
GAS TANK	\$317.00	J HOLDER PLATE	\$47.00
GAS TANK LARGE	\$506.00	J LOCK	\$19.00
GAS TANK LARGE	\$470.00	KICKER PC	\$32.00
GAUGE CUP	\$47.00	KICKER PEDAL	\$65.00
GENERATOR BAND	\$51.00	KICKER PEDAL BOLT	\$32.00
GENERATOR END	\$51.00	KICKER SPRING	\$32.00
GENERATOR HOUSING	\$74.00	KICKER SPRING BOLT	\$12.00
GIRDER	\$632.00	KICKER SPRING COVER	\$38.00
GIRDER RAIL	\$317.00	KICKSTAND	\$74.00
GIRDER SPRING	\$74.00	KNUCKLE	\$126.00
HALF CLAMP	\$28.00	KNUCKLE HEAD COVER	\$51.00
HAND LEVER	\$38.00	KNUCKLE NUT	\$19.00
HAND LEVER 3 PC	\$70.00	L BRACKET	\$89.00
HAND LEVER BRAKE	\$32.00	LEAF SPRING HOLDER	\$49.00
HAND LEVER CLUTCH	\$32.00	LEAF SPRING HOLDER T/S	\$96.00
HAND LEVER MASTER CLUT 02	\$38.00	LEVER LARGE	\$55.00
HANDLEBAR	\$190.00	LEVER SMALL	\$28.00
HANDLEBAR CLAMP	\$65.00	LINKAGE & END	\$55.00
HANDLEBAR COVER	\$89.00	LINKAGE & END SMALL	\$47.00



## Harley Big Twin Evolution Twin Cam V-Rod Buell, continued

ITEM	RETAIL
LINKAGE ROD DYNA EXT	\$74.00
LINKAGE ROD PRO 1	\$43.00
LOWER LEG	\$126.00
LOWER LEG FL	\$153.00
LOWER LEG FXR XL	\$126.00
LOWER LEG ST	\$153.00
LOWER LEG V-ROD	\$153.00
LOWER LEG WG	\$153.00
LOWER LEG (REM REF MNTS)	\$158.00
LOWER LEG FL 2000	\$153.00
LOWER LEG FL REM BRK MNT	\$185.00
LOWER LEG FXR XL 2000	\$126.00
LOWER LEG ST 2000	\$153.00
LOWER LEG STEEL	\$126.00
LOWER LEG WG (REM REF MNTS)	\$184.00
LOWER LEG WG N/S	\$153.00
LOWER LEG WG N/S 2000	\$153.00
LOWER TREE	\$135.00
LOWER TREE 2 PC	\$165.00
LOWER TREE WG	\$165.00
LOWER TREE COVER	\$55.00
LOWER TREE V-ROD ALUM	\$153.00
LUG	\$12.00
LUGGAGE RACK	\$239.00
LUGGAGE RACK LARGE	\$317.00
LUGGAGE RACK RAIL	\$65.00
LUGGAGE RACK ROD	\$63.00
LUGGAGE RACK SIDE PC	\$63.00
LUGGAGE RACK SIDE RAIL	\$65.00
MAG BASE	\$65.00
MAGNETO BODY	\$89.00
MAGNETO POINT HOUSE	\$153.00
MANIFOLD	\$74.00
MANIFOLD LARGE	\$153.00
MANIFOLD NUT	\$47.00
MANIFOLD SPACER	\$47.00
MASTER & TOP	\$122.00
MASTER & TOP CAST IRON	\$122.00
MASTER ADJUST & END	\$47.00
MASTER CYLINDER	\$103.00
MASTER CYLINDER & TOP 9/16	\$122.00
MASTER CYLINDER CI	\$103.00
MASTER CYLINDER & TOP	\$122.00
MASTER CYLINDER BRACKET	\$55.00
MASTER CYLINDER COVER	\$55.00
MASTER TOP	\$19.00
MIRROR	\$55.00
MIRROR ROD	\$38.00
MOTOR MOUNT	\$74.00
MOUSE TRAP ALUMINUM	\$103.00
MOUSE TRAP COVER	\$55.00
MOUSE TRAP ELIMINATOR BRAC	\$47.00
MOUSE TRAP SPRING	\$55.00
MOUSE TRAP SPRING COVER	\$55.00
MOUSE TRAP STEEL	\$74.00
MUFFLER LARGE	\$190.00
MUFFLER SMALL	\$100.00
MUFFLER TUBE	\$89.00
MUFFLER TUBE W/BACKET	\$158.00
NITROS BOTTLE LITTLE	\$117.00
NITROUS BOTTLE LARGE	\$153.00
OIL CAP	\$47.00
OIL CAP 2 PC	\$74.00
OIL COOLER	\$103.00
OIL COOLER 2 PC	\$103.00
OIL COOLER BRACKET	\$47.00
OIL DRAIN	\$38.00
OIL FILLER COVER	\$103.00
OIL FILTER CANISTER	\$55.00
OIL FILTER MOUNT	\$65.00

ITEM	RETAIL
OIL FILTER MOUNT 01	\$65.00
OIL FILTER MOUNT ALUM 99	\$82.00
OIL FILTER MOUNT LARGE	\$103.00
OIL FILTER ROD	\$51.00
OIL LINE	\$47.00
OIL LINE LARGE	\$74.00
OIL PAN	\$190.00
OIL PUMP	\$153.00
OIL PUMP ALUM	\$153.00
OIL PUMP STEEL	\$153.00
OIL PUMP CASE COVER ALUM	\$74.00
OIL PUMP PC ALUM	\$19.00
OIL PUMP TOP	\$65.00
OIL TANK	\$239.00
OIL TANK 2 PC	\$317.00
OIL TANK BRACKET	\$55.00
OIL TANK SIDE COVER	\$81.00
PAN ALUMINUM	\$107.00
PAN STEEL	\$107.00
PET COCK 5 PC	\$55.00
PHASE 3 PC	\$103.00
PIONT HOUSE V-ROD	\$153.00
PLUG LARGE	\$12.00
POINT COVER	\$32.00
POINT HOUSE	\$122.00
POINT HOUSE 99	\$122.00
PRIMARY COVER STEEL	\$228.00
PRIMARY COVER W/DERBY	\$286.00
PRIMARY HOUSING INNER	\$267.00
PRIMARY HOUSING INNER CAST	\$317.00
PRIMARY PLATE	\$47.00
PRIMARY PLATE 99	\$47.00
PRONG COVER	\$19.00
PULLEY REAR 70T	\$190.00
PULLEY SMALL	\$138.00
PULLEY REAR 70TH W 2000	\$190.00
PULLEY REAR SOFTAIL 2001	\$190.00
PULLEY REAR V-ROD	\$205.00
RADIATOR SIDE COVER V-ROD	\$153.00
RAIL	\$89.00
REAR FOOTPEG MOUNT 02	\$132.00
REAR FOOTPEG MOUNT V-ROD	\$65.00
REAR SECTION BUELL ALUM	\$470.00
REGULATOR BRACKET	\$74.00
REGULATOR COVER	\$55.00
RIM **	\$311.00
RISER ALUM SMALL	\$38.00
RISER LARGE	\$55.00
RISER & CAP LARGE	\$103.00
RISER COVER V-ROD	\$74.00
RISER LARGE V-ROD	\$74.00
RISER V-ROD	\$74.00
ROCKER ARM	\$74.00
ROCKER BOX	\$190.00
ROCKER BOX 2 PC	\$116.00
ROCKER BOX 3 PC	\$153.00
ROCKER BOX 2 PC TWIN CAM	\$153.00
ROCKER BOX BRACKET	\$47.00
ROCKER BOX COVER EVOLUTION	\$58.00
ROCKER CAP	\$9.00
ROTOR	\$153.00
ROTOR FLOATING	\$243.00
ROTOR FLOATING JAP	\$189.00
ROUND PLATE	\$47.00
ROUND PLATE LARGE	\$55.00
S & S BREATHER COVER - S	\$103.00
SADDLE BAG GUARD	\$239.00
SADDLE BAG GUARD RAIL	\$89.00
SADDLE BAG MOUNT	\$153.00
SADDLE BAG PLATE	\$122.00



## Harley Big Twin Evolution Twin Cam V-Rod Buell, continued

ITEM	RETAIL	ITEM	RETAIL
SADDLE BAG SHAFT BOLT	\$19.00	SPOTLIGHT SPACER SM	\$12.00
SADDLEBAG MOUNT SUPPORT STK	\$59.00	SPRING	\$32.00
SEAT LARGE	\$190.00	SPRING SPRINGER LARGE	\$55.00
SEAT POST MOUNT 2000	\$74.00	SPRING SPRINGER MEDIUM	\$43.00
SENDING UNIT	\$19.00	SPRING SPRINGER SMALL	\$38.00
SHAFT	\$28.00	SPRINGER 2 PC	\$711.00
SHIFTER	\$51.00	SPRINGER BACK PC	\$394.00
SHIFTER ALUM	\$51.00	SPRINGER FRONT PC	\$317.00
SHIFTER HEEL TOE	\$74.00	SPROCKET	\$153.00
SHIFTER ALUM V-ROD	\$103.00	SPROCKET COVER ALUM V-ROD	\$123.00
SHIFTER BACK	\$51.00	SPROCKET DRUM	\$165.00
SHIFTER BRACKET	\$103.00	STABILIZER BAR	\$65.00
SHIFTER BRACKET 03 DYNA	\$89.00	STABILIZER BAR SMALL	\$55.00
SHIFTER BRACKET 2000 ST S	\$153.00	STABILIZER LINKAGE	\$55.00
SHIFTER BRACKET DYNA	\$103.00	STARTER END	\$51.00
SHIFTER BRACKET EXTENTION	\$103.00	STARTER END ALUM	\$74.00
SHIFTER BRACKET ST 2000	\$165.00	STARTER HOUSE	\$74.00
SHIFTER COVER	\$55.00	STOP & LOCK	\$103.00
SHIFTER GATE	\$74.00	STRAP ALUM 2000	\$19.00
SHIFTER LIGHT HOUSE 2 PC	\$55.00	STRAP V-ROD	\$19.00
SHIFTER SHORT COVER	\$55.00	SWING ARM	\$239.00
SHOCK	\$126.00	SWING ARM DYNA	\$317.00
SHOCK ADJUST PART	\$38.00	SWING ARM SOFTAIL **	\$737.00
SHOCK BOLT	\$19.00	SWING ARM BOLT	\$32.00
SHOCK BOLT COVER	\$38.00	SWING ARM BOLT & NUT	\$38.00
SHOCK CLIP	\$19.00	SWING ARM BUELL	\$317.00
SHOCK COVER	\$74.00	SWING ARM BUELL ALUM	\$385.00
SHOCK COVER SMALL	\$38.00	SWING ARM FL 02	\$317.00
SHOCK COVER SMALL ALUM	\$43.00	SWING ARM KB	\$352.00
SHOCK SPRING	\$74.00	SWING ARM MOUNT	\$74.00
SHOCK TOP	\$38.00	SWING ARM V-ROD ALUM	\$419.00
SIDE CAR STEP	\$103.00	SWITCH BRACKET	\$32.00
SIDE COVER	\$74.00	SWITCH COVER	\$32.00
SIDE COVER LARGE	\$103.00	SWITCH HOUSE	\$19.00
SIDE RAIL ALUM	\$117.00	SWITCH HOUSING	\$32.00
SIDE RAIL SOFTAIL	\$153.00	SWITCH NUT	\$19.00
SIDE RAIL STEEL	\$103.00	TACH DRIVE	\$38.00
SISSY BAR	\$81.00	TACH PC	\$19.00
SISSY BAR LARGE	\$317.00	TAG BRACKET LARGE	\$103.00
SKID PLATE	\$103.00	TAG PLATE	\$55.00
SLIDER LOWER FL	\$153.00	TAIL LIGHT HOUSE	\$74.00
SLIDER LOWER FL 00	\$153.00	TAIL LIGHT RING	\$43.00
SLIDER LOWER FXR XL	\$126.00	TANK STRIP	\$122.00
SLIDER LOWER ST	\$153.00	TANK STRIP 2 PC	\$169.00
SLIDER LOWER ST 00	\$153.00	THUNDER MUFFLER	\$427.00
SLIDER LOWER V-ROD	\$153.00	TOP MOTOR MOUNT	\$74.00
SLIDER LOWER WG	\$153.00	TOP MOTOR MOUNT 2 PC	\$74.00
SMALL TWISTED BRACKET	\$19.00	TOP MOTOR MOUNT PC	\$55.00
SPACER	\$23.00	TOP TREE	\$103.00
SPARK PLUG WIRE HOLDER	\$32.00	TOP TREE WG	\$135.00
SPEED HOUSE FXD	\$153.00	TOP TREE BILLET	\$135.00
SPEEDO & TACH BOTTOM	\$32.00	TOP TREE V-ROD ALUM	\$135.00
SPEEDO & TACH CUP	\$38.00	TORQUE ARM	\$103.00
SPEEDO & TACH HOUSE	\$103.00	TRANS BASE PLATE	\$103.00
SPEEDO & TACH HOUSE LARGE	\$153.00	TRANS BRACKET	\$38.00
SPEEDO COVER V-ROD	\$116.00	TRANS CASE	\$207.00
SPEEDO DRIVE	\$32.00	TRANS CASE 5 SPEED 2000	\$427.00
SPEEDO HOUSE ALUM	\$103.00	TRANS CASE 5 SPEED NEW	\$263.00
SPEEDO HOUSE FXR	\$153.00	TRANS END	\$122.00
SPEEDO HOUSE LARGE	\$304.00	TRANS END SMALL	\$89.00
SPEEDO HOUSE STEEL	\$103.00	TRANS END 5 SPEED NEW 99	\$103.00
SPEEDO HOUSE PM	\$103.00	TRANS END 5 SPEED NEW REM F	\$136.00
SPEEDO HOUSE V-ROD	\$103.00	TRANS TOP	\$122.00
SPEEDO MOUNT ALUM	\$74.00	TRANS TOP 5 SPEED	\$122.00
SPEEDO MOUNT LARGE	\$116.00	TRANS TOP 5 SPEED DYNA	\$122.00
SPOT LIGHT BRACKET	\$153.00	TREE NUT	\$19.00
SPOT LIGHT BRACKET SMALL	\$89.00	TUBE PLUG	\$19.00
SPOT LIGHT HOUSE	\$74.00	TURN SIGNAL MOUNT LARGE	\$103.00
SPOT LIGHT RING	\$47.00	VALVE BLOCK	\$89.00
SPOTLIGHT SPACER	\$19.00	VALVE BLOCK KNUCKLE	\$117.00



*Harley Big Twin Evolution Twin Cam V-Rod Buell, continued*

ITEM	RETAIL
VALVE GUIDE 12 PC	\$190.00
VALVE GUIDE 16 PC	\$279.00
VELOCITY STACK	\$74.00
WATER PUMP COVER V-ROD	\$74.00
WIND DEFLECTOR LARGE	\$153.00

ITEM	RETAIL
WINDSHIELD BRACKET	\$103.00
WINDSHIELD BRACKET LARGE	\$132.00
WINDSHIELD BRACKET SMALL	\$38.00
WINDSHIELD TRIM SMALL	\$55.00
WIRE HOLDER	\$55.00

## Harley Sportster Evolution Buell

ITEM	RETAIL
2 INTO 1 HEADER	\$317.00
ACCEL PUMP TOP	\$19.00
AXLE & NUT	\$47.00
AXLE END CAP	\$38.00
AXLE SPACER	\$28.00
BATTERY BOX	\$103.00
BATTERY COVER	\$103.00
BATTERY HOLD DOWN ROD	\$38.00
BATTERY SIDE	\$103.00
BATTERY STRAP	\$51.00
BATTERY TOP	\$65.00
BEARING CUP	\$28.00
BOSCH COVER	\$38.00
BOTTOM MOTOR MOUNT	\$74.00
BRACKET	\$55.00
BRACKET LARGE	\$103.00
BRACKET SMALL	\$32.00
BRAKE ARM	\$47.00
BRAKE BACKING PLATE ALLOY	\$126.00
BRAKE DRUM	\$153.00
BRAKE DRUM ALUM	\$190.00
BRAKE PEDAL	\$74.00
BRAKE PEDAL ALUM	\$74.00
BRAKE PEDAL LARGE	\$103.00
BRAKE ROD	\$65.00
BRAKE ROD NUT	\$19.00
BRAKE ROD PART	\$19.00
BREATHER BACKING PLATE	\$65.00
BREATHER COVER	\$89.00
CALIPER	\$126.00
CALIPER	\$126.00
CALIPER FRONT 2 PC	\$117.00
CALIPER REAR	\$126.00
CALIPER REAR 2 PC	\$153.00
CALIPER MOUNT	\$74.00
CALIPER MOUNT ALUM	\$132.00
CALIPER MOUNT SMALL	\$47.00
CALIPER MOUNT STEEL	\$74.00
CALIPER PC FRONT	\$100.00
CARBURETOR ARM	\$19.00
CARBURETOR BODY	\$190.00
CARBURETOR BOWL	\$65.00
CARBURETOR BRACE	\$47.00
CHAIN ADJUST END PLATE	\$19.00
CHAIN ADJUSTER	\$28.00
CHAIN GUARD	\$135.00
CHAIN GUARD BRACKET	\$47.00
CHOKE BRACKET	\$47.00
CHOKE LEVER	\$19.00
CHOKE TUBE	\$32.00
CHOKE TUBE BRACKET	\$32.00
CLAMP	\$28.00
CLAMP LARGE	\$38.00
COIL BRACKET	\$55.00
COIL BRACKET 2 PC	\$55.00
COIL COVER	\$55.00
COUNTER SHAFT	\$55.00
COUNTER SHAFT SMALL	\$32.00

ITEM	RETAIL
COUNTER SPROCKET COVER	\$122.00
COUNTER SPROCKET COVER NEW	\$122.00
COUNTER SPROCKET COVER OLD	\$122.00
COUNTER SPROCKET COVER BRAC	\$47.00
COVER	\$55.00
COVER LARGE	\$103.00
CURVED WASHER	\$12.00
CYLINDER	\$239.00
DIP STICK	\$19.00
DISC	\$153.00
DRIVE CHAIN	\$153.00
DUST COVER	\$12.00
END	\$19.00
FENDER FRONT	\$239.00
FENDER LARGE	\$397.00
FENDER BRACE	\$117.00
FENDER FRONT SMALL	\$239.00
FITTING 2 PC	\$28.00
FOOTPEG	\$38.00
FOOTPEG MOUNT	\$65.00
FOOTPEG MOUNT LARGE	\$89.00
FOOTPEG MOUNT REAR	\$103.00
FOOTPEG MOUNT SMALL	\$28.00
FORK COVER SMALL	\$47.00
FORK TUBE	\$190.00
GAS CAP	\$65.00
GAS TANK LARGE	\$632.00
GAS TANK SMALL	\$317.00
GATOR CLIP	\$19.00
GEARBOX COVER	\$173.00
GENERATOR BAND	\$55.00
GENERATOR END	\$51.00
GENERATOR HOUSE	\$74.00
GENERATOR HOUSING	\$74.00
GENERATOR STRAP	\$47.00
GIRDER	\$632.00
HALF CLAMP	\$19.00
HAND GRIP ALUM	\$55.00
HAND LEVER	\$38.00
HAND LEVER 3 PC	\$65.00
HAND LEVER PC	\$19.00
HANDLEBAR	\$126.00
HANDLEBAR CLAMP	\$65.00
HANDLEBAR PART	\$32.00
HANDLEBAR PC	\$100.00
H-D EMBLEM	\$74.00
HEAD	\$239.00
HEAD NUT	\$19.00
HEADLIGHT MOUNT	\$74.00
HEADLIGHT RIM	\$65.00
HEADLIGHT SHELL	\$89.00
HEADLIGHT SHROUD	\$153.00
HEAT GUARD	\$89.00
HOLD DOWN	\$9.00
HORN BRACKET	\$47.00
HORN COVER	\$55.00
HUB ALUM	\$122.00
HUB STEEL	\$100.00



*Harley Sportster Evolution Buell, continued*

ITEM	RETAIL	ITEM	RETAIL
HYDRO LINE	\$55.00	PRIMARY COVER	\$216.00
INSPECTION PLATE	\$38.00	PRIMARY COVER STEEL	\$197.00
JUG	\$239.00	PRIMARY PLATE	\$19.00
KICKER PEDAL	\$65.00	PRIMARY PLUG	\$19.00
KICKER PEDAL 2 PC	\$74.00	PRONG COVER	\$19.00
KICKER SPRING BOLT	\$9.00	REAR CALIPER	\$126.00
KICKSTAND	\$74.00	REAR CALIPER 2 PC	\$126.00
LEVER LARGE	\$55.00	REAR FENDER	\$397.00
LINKAGE	\$51.00	REAR MOTOR MOUNT	\$103.00
LINKAGE & END	\$55.00	REGULATOR BRACKET	\$74.00
LONG BOLT	\$19.00	REGULATOR COVER	\$55.00
LOWER LEG	\$126.00	RETAINER	\$19.00
LOWER LEG STEEL	\$126.00	RISER	\$38.00
LOWER LEG SUPER	\$126.00	RISER LARGE	\$55.00
LOWER LEG (REM REF MOUNTS)	\$158.00	RISER & CAP	\$74.00
LOWER MOTOR MOUNT	\$89.00	RISER & CAP LARGE	\$103.00
LOWER TREE	\$135.00	ROCKER BOX	\$165.00
LOWER TREE COVER	\$55.00	ROCKER BOX 3 PC	\$153.00
MAG HOUSE	\$89.00	ROCKER CAP	\$9.00
MAG MOUNT	\$47.00	ROCKER CAP CUSTOM	\$12.00
MAG SPACER	\$38.00	S & S BREATHER COVER	\$103.00
MAGNETO BASE	\$74.00	S & S TWO THROAT BREATHER	\$117.00
MAGNETO HOUSE	\$89.00	SEAT BRACKET	\$74.00
MAGNETO MOUNT	\$65.00	SET OF HANDLEBARS	\$190.00
MANIFOLD	\$74.00	SHAFT	\$19.00
MASTER & TOP	\$122.00	SHIFTER	\$51.00
MASTER ADJUST & END	\$47.00	SHIFTER ALUM	\$103.00
MASTER CYL. W/WINDOW 3/4	\$103.00	SHIFTER PEG	\$19.00
MASTER CYL. W/WINDOW 5/8	\$103.00	SHOCK	\$126.00
MASTER CYL. W/WINDOW 11/16	\$103.00	SHOCK ADJUST PART	\$38.00
MASTER CYL.&TOP W/WIN 3/4	\$122.00	SHOCK BOLT	\$28.00
MASTER CYL.&TOP W/WIN 5/8	\$122.00	SHOCK BOLT COVER	\$38.00
MASTER CYL.&TOP W/WIN 11/16	\$122.00	SHOCK CLIP	\$19.00
MASTER CYLINDER	\$103.00	SHOCK COVER	\$38.00
MASTER CYLINDER 5/8	\$103.00	SHOCK COVER LARGE	\$74.00
MASTER CYLINDER 11/16	\$103.00	SHOCK SPRING	\$74.00
MASTER CYLINDER 3/4	\$103.00	SIDE RAIL	\$103.00
MASTER CYLINDER & TOP 3/4	\$122.00	SIDE RAIL ALUM	\$117.00
MASTER CYLINDER & TOP 5/8	\$122.00	SISSY BAR	\$239.00
MASTER CYLINDER & TOP 11/16	\$122.00	SISSY BAR LARGE	\$317.00
MASTER CYLINDER BRACKET	\$55.00	SISSY BAR MOUNT	\$103.00
MASTER TOP	\$19.00	SPACER LARGE	\$38.00
MIRROR ROD	\$38.00	SPACER LARGE	\$28.00
MOTOR MOUNT	\$74.00	SPACER SMALL	\$19.00
MOUNT	\$74.00	SPEEDO & TACH BOTTOM	\$38.00
MUFFLER LARGE	\$173.00	SPEEDO & TACH CUP	\$38.00
MUFFLER TUBE	\$103.00	SPEEDO & TACH MOUNT	\$103.00
NIPPLE	\$4.00	SPEEDO DRIVE	\$32.00
OIL CAP 3 PC	\$55.00	SPEEDO MOUNT	\$55.00
OIL COOLER	\$103.00	SPOKE & NIPPLE	\$9.00
OIL COOLER BRACKET	\$47.00	SPRING	\$32.00
OIL DRAIN	\$38.00	SPRING LARGE	\$38.00
OIL FILTER MOUNT	\$47.00	SPRINGER 2 PC	\$711.00
OIL LINE	\$38.00	SPROCKET	\$153.00
OIL LINE LARGE	\$74.00	SPROCKET DRUM	\$165.00
OIL PUMP	\$153.00	STABILIZER BAR	\$65.00
OIL PUMP SPACER	\$65.00	STARTER END	\$51.00
OIL PUMP TOP	\$65.00	STARTER HOUSE	\$74.00
OIL TANK	\$239.00	STARTER HOUSE ALLOY	\$89.00
OIL TANK 2 PC	\$317.00	STARTER HOUSE END	\$51.00
OIL TANK BRACKET	\$47.00	STARTER PLATE	\$65.00
OIL TANK CAP 2 PC	\$47.00	STRAP	\$19.00
OIL TANK MOUNT	\$55.00	SWING ARM	\$239.00
OIL TANK SIDE COVER	\$81.00	SWING ARM BOLT	\$32.00
PAD RETAINER	\$22.00	SWING ARM BOLT & NUT	\$47.00
PEG	\$47.00	SWING ARM NUT	\$19.00
PET COCK	\$65.00	SWITCH BRACKET	\$32.00
PET COCK 6 PC	\$65.00	TACH DRIVE	\$32.00
PLUG W/SCREEN	\$19.00	TACH DRIVE PC	\$28.00
POINT COVER	\$32.00	TAG BRACKET	\$74.00



*Harley Sportster Evolution Buell, continued*

ITEM	RETAIL
TAG BRACKET 2 PC	\$65.00
TAG BRACKET 3 PC	\$74.00
TAIL LIGHT COVER	\$55.00
TAIL LIGHT HOUSE	\$74.00
TAIL LIGHT RING	\$32.00
THROTTLE PC	\$19.00
TOP MOTOR MOUNT	\$103.00
TOP TREE	\$103.00
TREE COVER	\$65.00
TREE NUT	\$19.00
TUBE	\$47.00
TUBE PLUG	\$19.00

**Indian Chief Scout**

ITEM	RETAIL
AXLE & NUT	\$47.00
AXLE HOUSE 2 PC	\$949.00
BATTERY BOX	\$103.00
BATTERY BOX LID	\$65.00
BATTERY HOLD DOWN ROD	\$51.00
BATTERY TOP	\$65.00
BEARING CUP	\$28.00
BEARING SPACER	\$19.00
BLEEDER	\$9.00
BLINKER HOUSE	\$59.00
BLINKER HOUSE MOUNT	\$38.00
BOWL NUT	\$19.00
BRACKET	\$55.00
BRACKET LARGE	\$103.00
BRACKET SMALL	\$32.00
BRAKE ARM	\$38.00
BRAKE BACKING PLATE	\$103.00
BRAKE BAR	\$103.00
BRAKE DRUM	\$153.00
BRAKE DRUM W/HUB	\$153.00
BRAKE PEDAL	\$74.00
BRAKE PEDAL ALUM	\$103.00
BRAKE PEDAL MOUNT	\$103.00
BRAKE ROD	\$65.00
BRAKE ROTOR	\$153.00
BREATHER BACKING PLATE	\$74.00
BREATHER COVER	\$103.00
BREATHER COVER CHIEF	\$153.00
BREATHER COVER T 3	\$74.00
BUMPER REAR	\$153.00
CABLE	\$74.00
CALIPER 2 PC	\$126.00
CALIPER MOUNT ALUM	\$117.00
CALIPER MOUNT SMALL	\$47.00
CAM COVER	\$153.00
CARBURETOR BODY	\$190.00
CARBURETOR BOWL	\$65.00
CARBURETOR LEVER	\$32.00
CENTER STAND	\$190.00
CHAIN GUARD	\$122.00
CHOKE LEVER	\$19.00
CHOKE ROD	\$19.00
CLAMP	\$32.00
CLAMP LARGE	\$51.00
CLUTCH ARM	\$74.00
CLUTCH HUB	\$153.00
CLUTCH PEDAL	\$89.00
CLUTCH PEDAL MOUNT	\$103.00
CLUTCH PLATE	\$55.00
CLUTCH SPRING	\$19.00
CLUTCH SPRINGER COVER	\$38.00
COIL BRACKET	\$55.00
COVER	\$74.00

ITEM	RETAIL
TURN SIGNAL MOUNT	\$74.00
TWEAK BAR 2 PC	\$103.00
U BOLT 2 PC	\$28.00
VALVE BLOCK	\$51.00
VALVE BLOCK SPT EVOLUTION	\$65.00
VALVE GUIDE 16 PC	\$279.00
VALVE GUIDE 12 PC	\$190.00
VALVE GUIDE 16 PC	\$279.00
VALVE GUIDE PIN PLATE	\$12.00
VALVE GUIDE TUBE	\$23.00
VELOCITY STACK	\$74.00

ITEM	RETAIL
COVER LARGE	\$103.00
CRASH BAR	\$317.00
CRASH BAR LARGE	\$397.00
CRASH BAR SMALL	\$190.00
DAMPER KNOB	\$32.00
DERBY COVER INDIAN	\$74.00
DERBY COVER T 3	\$74.00
DISC	\$153.00
DISTRIBUTOR BASE	\$55.00
DISTRIBUTOR CLAMP	\$28.00
DISTRIBUTOR CLIP	\$19.00
DISTRIBUTOR CUP	\$32.00
DISTRIBUTOR TOP	\$32.00
DRIVE CHAIN	\$153.00
DRIVE PULLEY	\$153.00
END	\$19.00
END ALUM	\$19.00
EXHAUST PIPE (PER FOOT)	\$65.00
FENDER REAR	\$468.00
FENDER SMALL	\$190.00
FENDER BRACE	\$153.00
FENDER FRONT	\$317.00
FENDER STRUT	\$153.00
FITTING LARGE	\$28.00
FOOTBOARD	\$89.00
FOOTBOARD MOUNT ALUM	\$65.00
FOOTPEG	\$38.00
FOOTPEG	\$32.00
FOOTPEG MOUNT	\$65.00
FOOTPEG MOUNT LARGE	\$74.00
FOOTPEG MOUNT SMALL	\$38.00
FORK TUBE SMALL	\$190.00
GAS CAP	\$65.00
GAS TANK	\$317.00
GAS TANK LARGE	\$477.00
GAS TANK TRIM	\$74.00
GAS TANK TRIM LARGE	\$103.00
GAS TANK TRIM SMALL	\$65.00
GENERATOR BAND	\$51.00
GENERATOR END	\$65.00
GENERATOR HOUSE	\$74.00
HAND LEVER	\$38.00
HAND LEVER PC	\$32.00
HANDLEBAR	\$190.00
HANDLEBAR LARGE	\$190.00
HANDLEBAR CLAMP	\$65.00
HANDLEBAR COVER	\$89.00
HANDLEBAR PART	\$32.00
HANDLEBAR SLEEVE	\$28.00
H-D EMBLEM	\$65.00
HEAD	\$239.00
HEAD BOLT	\$12.00
HEAD WASHER	\$9.00

*Indian Chief Scout, continued*

ITEM	RETAIL	ITEM	RETAIL
HEADLIGHT MOUNT	\$74.00	REGULATOR COVER	\$55.00
HEADLIGHT RIM	\$65.00	RISER	\$38.00
HEADLIGHT SHELL	\$82.00	RISER & CAP LARGE	\$103.00
HEADLIGHT SHROUD INDIAN	\$171.00	ROCKER BOX 2 PC INDIAN	\$153.00
HOLD DOWN	\$19.00	ROCKER BOX 2 PC S & S	\$153.00
HORN	\$103.00	ROCKER BOX 3 PC	\$153.00
HORN BRACKET LARGE	\$55.00	ROD	\$55.00
HORN COVER	\$55.00	S & S BREATHER COVER	\$103.00
HUB	\$100.00	SEAT BRACKET	\$103.00
HUB FRONT ALUM	\$153.00	SEAT POST	\$74.00
HUB REAR ALUM	\$153.00	SEAT SPRING	\$38.00
INDIAN EMBLEM	\$65.00	SEDIMENT BOWL & TOP	\$38.00
INNER CHAIN GUARD	\$165.00	SHAFT	\$32.00
INNER PRIMARY COVER INDIAN	\$304.00	SHAFT BOLT	\$28.00
INNER TRANS COVER	\$122.00	SHIFTER	\$51.00
INSPECTION PLATE	\$51.00	SHIFTER COVER	\$55.00
J SOCKET	\$47.00	SHIFTER GATE	\$55.00
JUG	\$239.00	SHIFTER KNOB	\$32.00
KICKER BOLT	\$28.00	SHIFTER PEDAL ALUM	\$74.00
KICKER PEDAL	\$65.00	SHIFTER ROD	\$55.00
KICKER SPRING	\$32.00	SIDE RAIL MOUNT	\$103.00
KICKSTAND	\$74.00	SIDE RAIL SOFTAIL STYLE	\$153.00
KICKSTAND SOCKET	\$51.00	SPACER	\$23.00
LEVER LARGE	\$55.00	SPACER LARGE	\$38.00
LEVER SMALL ALUM	\$28.00	SPEEDO HOUSE STEEL	\$103.00
LINKAGE	\$55.00	SPOKE & NIPPLE	\$9.00
LINKAGE & END	\$55.00	SPOT LIGHT	\$74.00
LONG BOLT	\$32.00	SPOT LIGHT BRACKET	\$89.00
LOWER LEG WIDE	\$153.00	SPOT LIGHT MOUNT LARGE	\$153.00
LOWER TREE WIDE	\$167.00	SPOT LIGHT RING	\$47.00
LUG	\$12.00	SPRING	\$32.00
LUGGAGE RACK	\$239.00	SPRING SMALL	\$19.00
LUGGAGE RACK LARGE	\$317.00	SPRING COVER	\$51.00
MANIFOLD	\$74.00	SPRING TOP	\$32.00
MANIFOLD NUT	\$28.00	SPRINGER 2 PC	\$711.00
MASTER CYLINDER	\$103.00	SPRINGER FRONT PC	\$397.00
MASTER CYLINDER & TOP	\$122.00	SPROCKET DRUM	\$165.00
MASTER TOP	\$19.00	STAR WASHER	\$28.00
MOUNT FORWARD CONTROL	\$74.00	STARTER HOUSE	\$74.00
MUFFLER	\$173.00	STARTER HOUSE END	\$51.00
NIPPLE	\$4.00	STRAP	\$19.00
OIL CANNISTER ROD	\$47.00	SWING ARM INDIAN	\$317.00
OIL CAP	\$55.00	SWING ARM SCOUT	\$473.00
OIL FILTER CANNISTER	\$47.00	SWING ARM SOFTAIL STYLE	\$737.00
OIL FILTER PLUG	\$19.00	SWITCH COVER	\$32.00
OIL FILTER TOP	\$55.00	TAG BRACKET	\$74.00
OIL LINE	\$47.00	TAG BRACKET	\$103.00
OIL LINE LARGE	\$74.00	TAIL LIGHT HOUSE	\$116.00
OIL LINE SMALL	\$38.00	TANK COVER STRIP	\$74.00
OIL PUMP	\$153.00	TOOL BOX 2 PC	\$103.00
OIL PUMP TOP	\$65.00	TOOL BOX LID	\$51.00
OIL TANK	\$239.00	TOP MOTOR MOUNT	\$74.00
OIL TANK BRACKET	\$55.00	TOP TREE COVER	\$65.00
PAD RETAINER	\$32.00	TOP TREE WIDE	\$122.00
PEDAL ALUM	\$74.00	TRANS CASE	\$207.00
PEDAL ALUM MED	\$55.00	TRANS END	\$122.00
PET COCK	\$65.00	TRANS END COVER	\$103.00
PET COCK KNOB	\$12.00	TRANS TOP	\$89.00
POINT HOUSE	\$122.00	TRANS TOP COVER ALUM	\$122.00
POINT HOUSE 2 PC	\$122.00	TREE NUT	\$19.00
PRIMARY	\$216.00	TUBE PLUG	\$19.00
PRIMARY COVER 12 HOLE	\$228.00	U BOLT	\$19.00
PRIMARY COVER 15 H INDIAN	\$228.00	VALVE BLOCK	\$89.00
PRIMARY PLATE	\$47.00	VALVE BLOCK ALUMINUM	\$117.00
PULLEY REAR DRIVE SPROCKET	\$190.00	VALVE GUIDE TUBE PC	\$23.00



## Honda GL 1000-1500, V-65

ITEM	RETAIL
AIR CLEANER COVER	\$103.00
AIR SCOOP	\$103.00
AXLE & NUT	\$47.00
BAR	\$74.00
BATTERY BOX	\$103.00
BELT COVER	\$117.00
BLEEDER	\$4.00
BRACKET	\$74.00
BRACKET LARGE	\$135.00
BRACKET SMALL	\$32.00
BRAKE ARM	\$38.00
BRAKE BACKING PLATE	\$103.00
BRAKE DRUM & HUB	\$190.00
BRAKE LINE	\$47.00
BRAKE MOUNT	\$74.00
BRAKE PEDAL	\$74.00
BRAKE ROD	\$65.00
BREATHER COVER	\$103.00
CALIPER 2 PC	\$117.00
CALIPER MOUNT	\$74.00
CAM COVER	\$190.00
CAM END PART	\$32.00
CAP	\$12.00
CARBURETOR ARM	\$28.00
CARBURETOR BOWL	\$47.00
CARBURETOR BRACKET	\$38.00
CARBURETOR BRACKET LARGE	\$47.00
CARBURETOR COVER	\$74.00
CARBURETOR PC SMALL	\$12.00
CARBURETOR TOP	\$65.00
CARBURETOR TUBE	\$65.00
CENTER STAND	\$190.00
CHAIN PLATE	\$89.00
CHOKE BRACKET	\$19.00
CLAMP	\$28.00
CLAMP LARGE	\$47.00
CLUTCH COVER	\$135.00
CLUTCH COVER LARGE	\$153.00
CLUTCH OUTER COVER	\$55.00
COVER	\$122.00
COVER LARGE	\$153.00
CRASH BAR	\$317.00
CRASH BAR LARGE	\$397.00
CRASH BAR SMALL	\$190.00
DIP PLUG	\$19.00
DISC	\$153.00
DISC CENTER ONLY	\$153.00
DISC COVER	\$122.00
DRIVE SHAFT HOUSE	\$239.00
DUST COVER	\$12.00
DYNO BASE	\$70.00
DYNO COVER	\$103.00
EMBLEM	\$55.00
EXHAUST FLANGE	\$38.00
EXHAUST PIPE (PER FOOT)	\$65.00
EXTENSION BOLT	\$12.00
FAIRING BRACKET	\$153.00
FAIRING BRACKET MED	\$112.00
FAIRING SCREEN	\$38.00
FAIRING TRIM	\$153.00
FAN BRACKET	\$103.00
FENDER	\$317.00
FENDER LARGE	\$379.00
FENDER BRACE	\$103.00
FINAL DRIVE COVER	\$47.00
FLOOR BOARD	\$74.00
FOOT PEDAL	\$74.00
FOOTBOARD	\$74.00
FOOTBOARD MOUNT	\$55.00
FOOTPEG	\$38.00

ITEM	RETAIL
FOOTPEG GUARD 2 PC	\$32.00
FOOTPEG MOUNT	\$74.00
FOOTPEG MOUNT LARGE	\$103.00
FOOTPEG MOUNT SMALL	\$32.00
FORK BRACE	\$103.00
FORK TUBE	\$207.00
FUEL PUMP	\$65.00
FUEL PUMP TOP	\$55.00
FUEL PUMP TOP 2 PC	\$55.00
GAS CAP 2 PC	\$128.00
GAS CAP LATCH	\$38.00
HAND LEVER SMALL	\$32.00
HANDLEBAR 2 PC	\$190.00
HANDLEBAR END CAP	\$23.00
HANDLEBAR PART	\$32.00
HEADLIGHT MOUNT	\$74.00
HEADLIGHT RIM	\$55.00
HEADLIGHT SHELL	\$89.00
HEAT GUARD LARGE	\$103.00
HEAT GUARD SMALL	\$47.00
HONDA COVER	\$55.00
HONDA COVER LARGE	\$103.00
HUB FRONT	\$122.00
HUB REAR	\$190.00
INNER PULLEY COVER	\$65.00
INSTRUMENT HOUSE	\$65.00
INTAKE MANIFOLD	\$65.00
KICKSTAND	\$74.00
KICKSTAND 2 PC	\$74.00
KICKSTAND BRACKET	\$47.00
LOWER LEG	\$126.00
LOWER LEG STRAP	\$19.00
LOWER TREE	\$135.00
LUGGAGE RACK LARGE	\$317.00
LUGGAGE RACK SMALL	\$239.00
MASTER CYLINDER	\$103.00
MASTER CYLINDER & TOP	\$122.00
MIRROR MOUNT	\$38.00
MULTI-FITTING	\$38.00
NIPPLE	\$4.00
OIL COOLER BRACKET	\$47.00
OIL FILTER & SCREW	\$89.00
PLUG	\$19.00
POINT BASE	\$47.00
POINT COVER	\$51.00
POINT COVER GL1000	\$47.00
PRIMARY	\$165.00
PULLEY COVER	\$117.00
RADIATOR BRACKET	\$74.00
RADIATOR CAP	\$47.00
RADIATOR COVER	\$103.00
RADIATOR SCREEN	\$89.00
RADIATOR SIDE BRACKET	\$74.00
RADIATOR SIDE COVER	\$74.00
RADIATOR WIND DIRECTION	\$74.00
REAR DRIVE HOUSE	\$239.00
RISER SET BACK	\$47.00
ROD	\$38.00
ROUND PLATE LARGE	\$74.00
SEAT LOCK	\$47.00
SEAT LOCK BRACKET	\$47.00
SENDING UNIT	\$19.00
SHIFTER	\$51.00
SHOCK	\$126.00
SHOCK COVER	\$47.00
SIDE COVER LARGE	\$153.00
SIDE RAIL	\$103.00
SISSY BAR	\$190.00
SPACER	\$23.00
SPEEDO & TACH CUP	\$55.00

*Honda GL 1000-1500, V-65, continued*

ITEM	RETAIL
SPOKE & NIPPLE	\$9.00
SPRING	\$32.00
SPRING SMALL	\$23.00
STABILIZER BAR	\$65.00
STARTER COVER	\$55.00
STRAP	\$19.00
SWING ARM	\$239.00
SWITCH BRACKET	\$32.00
TACH DRIVE HOUSE	\$55.00
TACH DRIVE HOUSE OLD	\$55.00
TAIL LIGHT HOUSE	\$89.00
TIMING COVER	\$103.00
TOP TREE	\$103.00

**Honda 750-1100, CBX**

ITEM	RETAIL
AXLE & NUT	\$47.00
AXLE STOP	\$19.00
BATTERY BOX	\$103.00
BLEEDER	\$9.00
BRACKET LARGE	\$89.00
BRACKET SMALL	\$32.00
BRAKE ARM	\$38.00
BRAKE BACKING PLATE	\$103.00
BRAKE LINE	\$47.00
BRAKE PEDAL	\$74.00
BRAKE ROD	\$65.00
BRAKE ROD NUT	\$19.00
BRAKE SHAFT	\$19.00
CALIPER FRONT 2 PC	\$117.00
CALIPER MOUNT	\$74.00
CALIPER MOUNT 2 PC	\$74.00
CALIPER MOUNT 3 PC	\$117.00
CAM CHAIN ADJUSTER	\$55.00
CAM COVER	\$190.00
CAM COVER 750-900	\$190.00
CAM COVER CBX	\$252.00
CAM COVER LID	\$47.00
CAM END PART	\$32.00
CARBURETOR ARM ALUM	\$38.00
CARBURETOR ARM STEEL	\$32.00
CARBURETOR BACKING PLATE	\$89.00
CARBURETOR BOWL	\$47.00
CARBURETOR CLIP	\$19.00
CARBURETOR LEVER	\$32.00
CARBURETOR RING	\$19.00
CARBURETOR TOP LARGE	\$65.00
CARBURETOR TOP NEW STYLE	\$65.00
CARBURETOR TOP OLD STYLE	\$32.00
CENTER STAND	\$190.00
CHAIN ADJUSTER	\$28.00
CHAIN GUARD	\$103.00
CHAIN PLATE	\$89.00
CHAIN RETAINER	\$74.00
CHOKE LEVER	\$28.00
CHOKE ROD CLIP	\$19.00
CLAMP	\$28.00
CLAMP LARGE	\$47.00
CLAMP SMALL	\$19.00
CLUTCH ADJUST PC	\$19.00
CLUTCH COVER	\$89.00
CLUTCH COVER 750-900	\$135.00
CLUTCH COVER CBX	\$153.00
CLUTCH COVER LARGE	\$135.00
CLUTCH COVER NEW	\$135.00
CLUTCH COVER OLD	\$89.00
CLUTCH OUTER COVER	\$74.00
COLLECTOR	\$190.00

ITEM	RETAIL
TRANS COVER LARGE	\$190.00
TRIM PC	\$47.00
TUBE END	\$32.00
TUBE PLUG	\$19.00
U BOLT	\$19.00
VALVE COVER	\$117.00
VALVE COVER 2 PC	\$158.00
VALVE COVER 1500	\$146.00
VALVE COVER RETAINER RING	\$55.00
VALVE COVER RING	\$55.00
WATER BASE	\$47.00
WATER OUTLET LARGE	\$51.00

ITEM	RETAIL
COOL GRILL	\$103.00
COUNTER SHAFT	\$47.00
CRASH BAR SMALL	\$153.00
DIP PLUG	\$19.00
DISC	\$153.00
DOHC COVER	\$47.00
DRIVE CHAIN	\$153.00
DUST COVER	\$32.00
DYNO BASE	\$89.00
DYNO COVER	\$103.00
DYNO COVER OLD	\$103.00
EXHAUST FLANGE	\$38.00
EXHAUST PIPE (PER FOOT)	\$65.00
FAIRING SCREEN	\$38.00
FENDER	\$239.00
FENDER LARGE	\$397.00
FENDER SMALL	\$190.00
FIN COVER CUSTOM	\$74.00
FINAL DRIVE COVER	\$47.00
FOOTPEG	\$47.00
FOOTPEG MOUNT	\$74.00
FORK TUBE	\$190.00
GAS CAP	\$65.00
GAS CAP LARGE	\$74.00
GAS CAP COVER	\$89.00
GAS CAP LATCH	\$38.00
GAS TANK	\$477.00
GAS TANK LARGE	\$632.00
GAS TANK SMALL	\$317.00
GRAB RAIL	\$153.00
GUAGE RING SMALL	\$32.00
HAND LEVER	\$38.00
HANDLEBAR	\$190.00
HANDLEBAR PART	\$32.00
HEADER PIPE (2 INTO 1)	\$317.00
HEADER PIPE (4 INTO 1)	\$632.00
HEADLIGHT MOUNT	\$74.00
HEADLIGHT RING	\$55.00
HEADLIGHT SHELL	\$89.00
HEAT GUARD	\$74.00
HELMET LOCK	\$28.00
HOLD DOWN	\$9.00
HONDA COVER	\$47.00
HONDA COVER SMALL	\$55.00
HONDA EMBLEM	\$28.00
HONDA PLATE	\$47.00
HUB REAR	\$190.00
HUB FRONT	\$122.00
HYDRO LINE	\$47.00
INNER EXHAUST FLANGE	\$32.00
INSTRUMENT DECK	\$65.00
KICKER COVER	\$135.00

*Honda 750-1100, CBX, continued*

ITEM	RETAIL	ITEM	RETAIL
KICKER PC	\$32.00	SEAT BRACE	\$103.00
KICKER PEDAL 2 PC	\$74.00	SEAT RAIL	\$153.00
KICKSTAND	\$74.00	SENDING UNIT	\$19.00
KICKSTAND 2 PC	\$74.00	SHAFT	\$19.00
LEVER	\$38.00	SHIFTER	\$51.00
LID	\$47.00	SHOCK	\$126.00
LID CUSTOM	\$55.00	SHOCK ADJUSTER	\$38.00
LIGHT HOUSE	\$65.00	SHOCK COVER	\$55.00
LIGHT RING	\$28.00	SHOCK SPRING	\$74.00
LINKAGE & END	\$28.00	SHOCK TOP	\$32.00
LONG BOLT	\$19.00	SISSY BAR LARGE	\$239.00
LOWER LEG	\$126.00	SISSY BAR SMALL	\$153.00
LOWER LEG BRACKET	\$47.00	SISSY BAR MOUNT	\$103.00
LOWER TREE	\$135.00	SPACER	\$32.00
LOWERING BLOCK	\$47.00	SPEEDO & TACH HOUSE	\$55.00
LUGGAGE RACK LARGE	\$317.00	SPEEDO DRIVE	\$38.00
LUGGAGE RACK SMALL	\$190.00	SPOKE & NIPPLE	\$9.00
MASTER TOP	\$19.00	SPRING	\$32.00
MIRROR MOUNT	\$47.00	SPRING LARGE	\$38.00
MOTOR MOUNT	\$55.00	SPROCKET	\$153.00
MOTOR MOUNT LARGE	\$74.00	SPROCKET BACKING PLATE	\$103.00
MOTOR MOUNT SMALL	\$32.00	STABILIZER BAR	\$65.00
MOUNT LARGE	\$74.00	STARTER COVER	\$65.00
MULTI FITTING	\$38.00	STRAP	\$19.00
NIPPLE	\$4.00	SWING ARM	\$239.00
OIL COOLER BRACKET	\$47.00	SWING ARM NUT & BOLT	\$47.00
OIL FILLER COVER	\$89.00	SWITCH BRACKET	\$32.00
OIL FILTER	\$89.00	TACH DRIVE PC	\$19.00
OIL FILTER & SCREW	\$89.00	TAIL LIGHT HOUSE	\$74.00
OIL LINE LARGE	\$74.00	THROTTLE PC	\$19.00
OIL LINE SMALL	\$32.00	TOP TREE	\$103.00
OIL PAN	\$190.00	TRANS COVER 750-900 NEW	\$107.00
PET COCK	\$65.00	TRANS COVER 750-900 OLD	\$100.00
PET COCK BOWL	\$12.00	TRANS COVER CBX	\$122.00
PET COCK FACE PLATE	\$12.00	TRANS COVER NEW	\$107.00
PET COCK LEVER	\$12.00	TRANS COVER OLD	\$100.00
PET COCK NUT	\$12.00	TRANS PLATE	\$38.00
PLUG SMALL	\$9.00	TREE NUT LARGE	\$32.00
POINT BASE	\$74.00	TREE STEM NUT	\$19.00
POINT COVER	\$47.00	TUBE PLUG	\$19.00
POINTER	\$19.00	TWEAK BAR	\$103.00
PRIMARY COVER	\$216.00	VALVE COVER	\$190.00
RADIATOR CAP	\$65.00	VALVE COVER RETAINER RING	\$74.00
RADIATOR SIDE COVER	\$89.00	VELOCITY STACK	\$65.00
RETAINER	\$19.00		

**Honda 500, 550, 650**

ITEM	RETAIL	ITEM	RETAIL
ACCEL PUMP TOP	\$19.00	CALIPER FRONT 2 PC	\$117.00
AXLE	\$32.00	CALIPER REAR 2 PC	\$153.00
AXLE & NUT	\$47.00	CALIPER MOUNT	\$74.00
AXLE NUT	\$12.00	CALIPER MOUNT 2 PC	\$103.00
AXLE STOP	\$19.00	CALIPER MOUNT 3 PC	\$117.00
BAG RAIL MOUNT	\$89.00	CAM CHAIN ADJUSTER	\$55.00
BATTERY BOX	\$103.00	CAM COVER	\$190.00
BLEEDER	\$9.00	CAM COVER LID	\$51.00
BRACKET	\$55.00	CAM END PART	\$32.00
BRACKET LARGE	\$89.00	CAP	\$19.00
BRACKET SMALL	\$32.00	CARBURETOR BACKING PLATE	\$89.00
BRAKE ARM	\$38.00	CARBURETOR BOWL	\$47.00
BRAKE BACKING PLATE	\$103.00	CARBURETOR LEVER ALUMINUM	\$47.00
BRAKE LINE	\$47.00	CARBURETOR LEVER STEEL	\$32.00
BRAKE PEDAL	\$74.00	CARBURETOR TOP	\$65.00
BRAKE PEDAL 2 PC	\$74.00	CENTER STAND	\$190.00
BRAKE ROD	\$65.00	CENTER STAND PIN	\$38.00
BRAKE ROD NUT	\$19.00	CHAIN ADJUSTER	\$28.00
BREATHER LID	\$55.00	CHAIN GUARD	\$103.00
CALIPER 2 PC	\$117.00	CHAIN PLATE SMALL	\$55.00

*Honda 500, 550, 650, continued*

ITEM	RETAIL
CHAIN RETAINER	\$74.00
CHOKE LEVER	\$28.00
CLAMP	\$28.00
CLAMP LARGE	\$47.00
CLAMP SMALL	\$32.00
CLUTCH COVER	\$135.00
COLLECTOR	\$190.00
COUNTER SHAFT COVER	\$47.00
COVER	\$38.00
CYLINDER HEAD	\$632.00
DIP PLUG	\$19.00
DIP STICK	\$19.00
DISC	\$153.00
DISC CENTER ONLY	\$153.00
DUST COVER	\$32.00
DYNO BASE	\$74.00
DYNO COVER	\$103.00
END LARGE	\$19.00
EXHAUST FLANGE	\$38.00
EXHAUST PIPE (PER FOOT)	\$65.00
FENDER	\$252.00
FENDER LARGE	\$379.00
FENDER SMALL	\$190.00
FOOTPEG	\$38.00
FOOTPEG MOUNT	\$47.00
FOOTPEG MOUNT LARGE	\$103.00
FOOTPEG MOUNT SMALL	\$19.00
FORK BRACE	\$103.00
FORK TUBE	\$190.00
FORK TUBE LARGE	\$239.00
FORK TUBE SMALL	\$190.00
GAS CAP	\$65.00
GAS CAP COVER	\$89.00
GAS TANK	\$477.00
GAS TANK LARGE	\$632.00
GAS TANK SMALL	\$317.00
HAND LEVER	\$38.00
HANDLEBAR	\$190.00
HANDLEBAR PART	\$28.00
HANDLEBAR PART LARGE	\$47.00
HEADER PIPE 2 INTO 1	\$317.00
HEADER PIPE 4 INTO 1	\$632.00
HEADLIGHT MOUNT	\$74.00
HEADLIGHT SHELL	\$89.00
HI WAY BAR	\$153.00
HOLD DOWN	\$19.00
HONDA COVER	\$74.00
HONDA COVER SMALL	\$47.00
HONDA PLATE	\$51.00
HOSE SPRING COVER	\$47.00
HUB FRONT	\$122.00
HUB REAR	\$190.00
INNER EXHAUST FLANGE	\$32.00
INSTRUMENT DECK	\$47.00
JUG	\$632.00
KICKER COVER	\$135.00
KICKER PEDAL	\$65.00
KICKSTAND	\$74.00
KICKSTAND 2 PC	\$74.00
LEVER	\$32.00
LID	\$47.00
LONG BOLT	\$28.00
LOWER LEG	\$126.00
LOWER TREE	\$135.00
LUGGAGE RACK	\$239.00
LUGGAGE RACK LARGE	\$317.00

ITEM	RETAIL
LUGGAGE RACK SMALL	\$190.00
MANIFOLD	\$74.00
MASTER CYLINDER	\$103.00
MASTER CYLINDER & TOP	\$122.00
MASTER CYLINDER TOP	\$19.00
MIRROR MOUNT	\$32.00
MOTOR MOUNT	\$47.00
MOUNT LARGE	\$89.00
MULTI FITTING	\$38.00
NIPPLE	\$4.00
OIL FILTER	\$89.00
OIL FILTER & SCREW	\$89.00
OIL FILTER SCREW	\$19.00
OIL LINE	\$74.00
OIL TANK	\$239.00
PET COCK	\$65.00
PET COCK 3 PC	\$55.00
PET COCK 4 PC	\$65.00
PLUG	\$19.00
POINT COVER	\$74.00
POINT COVER SMALL	\$38.00
PRIMARY COVER	\$216.00
RADIATOR SIDE PC	\$89.00
REAR CHAIN	\$153.00
RETAINER	\$19.00
ROUND COVER	\$38.00
SEAT BRACE	\$117.00
SENDING UNIT	\$19.00
SET OF HANDLEBARS	\$190.00
SHIFTER	\$51.00
SHOCK	\$126.00
SHOCK COVER	\$47.00
SISSY BAR	\$190.00
SISSY BAR LARGE	\$239.00
SISSY BAR SMALL	\$190.00
SPACER	\$19.00
SPEEDO & TACH HOUSE	\$51.00
SPEEDO DRIVE	\$47.00
SPEEDO HOUSE	\$74.00
SPOKE	\$9.00
SPOKE & NIPPLE	\$9.00
SPRING	\$28.00
SPRING LARGE	\$47.00
SPRING SMALL	\$28.00
SPRING HOLDER	\$28.00
SPRINGER	\$711.00
SPROCKET	\$153.00
SPROCKET BACKING PLATE	\$103.00
STABILIZER BAR	\$65.00
STARTER LID	\$65.00
STRAP	\$19.00
SWING ARM	\$239.00
TACH HOUSE	\$74.00
TAIL LIGHT HOUSE	\$74.00
TOOL BOX	\$103.00
TOOL BOX TOP	\$51.00
TOP TREE	\$103.00
TRANS COVER	\$122.00
TUBE	\$55.00
TWEAK BAR	\$103.00
VALVE COVER	\$103.00
VALVE COVER RETAINER RING	\$74.00
VELOCITY STACK	\$74.00
WATER TUBE END	\$47.00



## Honda 350-450, Yamaha & Suzuki

ITEM	RETAIL
AXLE & NUT	\$47.00
AXLE STOP	\$19.00
BATTERY BOX	\$103.00
BRACKET	\$55.00
BRACKET LARGE	\$103.00
BRAKE ARM	\$38.00
BRAKE BACKING PLATE	\$103.00
BRAKE LEVER	\$38.00
BRAKE LINE	\$47.00
BRAKE PEDAL	\$74.00
BRAKE ROD	\$65.00
BRAKE ROD NUT	\$19.00
BREATHER LID	\$47.00
CALIPER 2 PC	\$117.00
CALIPER MOUNT	\$74.00
CAM CHAIN ADJUSTER	\$55.00
CAM PART	\$38.00
CAP	\$19.00
CARBURETOR BACKING PLATE	\$89.00
CARBURETOR BOWL	\$47.00
CARBURETOR CLIP	\$19.00
CARBURETOR TOP	\$38.00
CENTER STAND	\$190.00
CHAIN ADJUSTER	\$28.00
CHAIN GUARD	\$103.00
CHOKE LEVER	\$32.00
CLAMP LARGE	\$55.00
CLAMP SMALL	\$32.00
DIP STICK	\$19.00
DISC	\$153.00
DRIVE CHAIN	\$153.00
DUST COVER	\$38.00
DYNO BASE	\$89.00
DYNO COVER	\$103.00
E CLIP LARGE	\$19.00
EXHAUST FLANGE	\$38.00
EXHAUST PIPE (PER FOOT)	\$65.00
FENDER	\$239.00
FENDER LARGE	\$317.00
FOOTPEG	\$38.00
FOOTPEG MOUNT	\$47.00
FOOTPEG MOUNT LARGE	\$103.00
FORK TUBE	\$190.00
GAS CAP	\$65.00
GAS TANK LARGE	\$632.00
GAS TANK SMALL	\$317.00
HAND LEVER	\$38.00

## Suzuki 550, 750, 850, 1000, 1100

ITEM	RETAIL
AXLE & NUT	\$47.00
AXLE STOP	\$19.00
BATTERY BOX	\$103.00
BLEEDER	\$9.00
BRACKET LARGE	\$103.00
BRACKET SMALL	\$32.00
BRAKE ARM	\$38.00
BRAKE BACKING PLATE	\$103.00
BRAKE LINE	\$47.00
BRAKE PEDAL	\$74.00
BRAKE ROD	\$65.00
BREATHER COVER	\$103.00
BREATHER LID	\$47.00
BREATHER VENT	\$47.00
CABLE ADJUSTER 2 PC	\$19.00
CALIPER	\$117.00
CALIPER 4 PC	\$117.00
CALIPER MOUNT	\$117.00

ITEM	RETAIL
HANDLEBAR	\$190.00
HANDLEBAR CLAMP 2 PC	\$103.00
HANDLEBAR PART	\$32.00
HEADLIGHT RIM	\$65.00
HEADLIGHT SHELL	\$89.00
HONDA COVER	\$55.00
HUB FRONT	\$190.00
HUB REAR	\$190.00
KICKER BOLT	\$32.00
KICKER PEDAL	\$74.00
KICKSTAND	\$74.00
LOWER LEG	\$126.00
LOWER TREE	\$135.00
LUGGAGE RACK LARGE	\$317.00
LUGGAGE RACK SMALL	\$190.00
MOTOR MOUNT	\$55.00
MUFFLER	\$165.00
NIPPLE	\$4.00
OIL PC	\$47.00
PET COCK 7 PC	\$74.00
PLUG	\$19.00
PRIMARY	\$216.00
RETAINER	\$28.00
SHIFTER	\$51.00
SIDE RAIL	\$103.00
SISSY BAR LARGE	\$317.00
SISSY BAR SMALL	\$190.00
SPACER	\$19.00
SPEEDO & TACH HOUSE	\$47.00
SPOKE & NIPPLE	\$9.00
SPRING	\$19.00
SPRING LARGE	\$47.00
SPROCKET	\$153.00
STABILIZER BAR	\$65.00
STARTER END	\$51.00
STARTER HOUSE	\$74.00
STARTER HOUSE END	\$51.00
STRAP	\$19.00
SWING ARM	\$239.00
TACH HOUSE	\$51.00
TAIL LIGHT HOUSE	\$74.00
TOP TREE	\$103.00
TRANS COVER	\$153.00
TRANS INNER COVER	\$103.00
TRANS OUTER COVER	\$153.00
VALVE COVER	\$122.00
VELOCITY STACK	\$65.00

ITEM	RETAIL
CALIPER MOUNT ALUM	\$117.00
CAM CHAIN ADJUSTER	\$38.00
CAM COVER	\$190.00
CAM COVER 1100	\$190.00
CAM COVER 550-1000	\$190.00
CAM COVER CAP	\$19.00
CAM COVER LID	\$47.00
CAM END PART	\$32.00
CAM PART	\$32.00
CARBURETOR BACKING PLATE	\$89.00
CARBURETOR BOWL	\$47.00
CARBURETOR BRACKET	\$38.00
CARBURETOR LEVER ALUMINUM	\$38.00
CARBURETOR LEVER STEEL	\$32.00
CARBURETOR TOP	\$38.00
CENTER STAND	\$190.00
CHAIN ADJUSTER	\$28.00
CHAIN RETAINER	\$74.00

*Suzuki 550, 750, 850, 1000, 1100, continued*

ITEM	RETAIL
CLAMP LARGE	\$55.00
CLAMP SMALL	\$32.00
CLUTCH COVER	\$135.00
COLLECTOR	\$190.00
COVER	\$38.00
DIP STICK	\$19.00
DISC	\$153.00
DUST COVER	\$38.00
DYNO COVER	\$107.00
EXHAUST FLANGE	\$38.00
EXHAUST PIPE (PER FOOT)	\$65.00
FENDER	\$252.00
FENDER LARGE	\$317.00
FINAL DRIVE HOUSE	\$239.00
FITTING LARGE	\$12.00
FOOTPEG	\$38.00
FOOTPEG MOUNT	\$47.00
FOOTPEG MOUNT LARGE	\$103.00
FORK TUBE	\$190.00
GAS CAP	\$65.00
GAS CAP COVER	\$74.00
GAS TANK	\$477.00
GAS TANK LARGE	\$632.00
HAND LEVER	\$38.00
HANDLEBAR	\$190.00
HANDLEBAR CLAMP	\$74.00
HANDLEBAR PART	\$32.00
HEADER PIPE 2 INTO 1	\$317.00
HEADER PIPE 4 INTO 1	\$632.00
HEADLIGHT MOUNT	\$74.00
HEADLIGHT SHELL	\$89.00
HOLD DOWN SMALL	\$9.00
HUB FRONT	\$122.00
HUB REAR	\$190.00
INNER EXHAUST FLANGE	\$32.00
INSPECTION PLATE	\$47.00
INSTRUMENT DECK	\$47.00
KICKER COVER	\$135.00
KICKER PC.	\$38.00
KICKER PEDAL	\$74.00
KICKSTAND	\$74.00
LID	\$51.00
LONG BOLT	\$19.00
LOWER LEG	\$126.00
LOWER TREE	\$135.00
MASTER CYLINDER & TOP	\$122.00
MASTER CYLINDER TOP	\$19.00
MIRROR MOUNT	\$32.00
MOTOR MOUNT	\$55.00

ITEM	RETAIL
MULTI-FITTING	\$38.00
NUT LARGE	\$12.00
OIL PC	\$38.00
OIL SIDE COVER	\$107.00
OIL TANK	\$239.00
OIL VENT	\$89.00
PET COCK	\$65.00
PET COCK FACE PLATE	\$12.00
PET COCK LEVER	\$12.00
PLUG	\$12.00
POINT COVER	\$51.00
PRIMARY	\$216.00
REAR CHAIN	\$153.00
SENDING UNIT	\$19.00
SHIFTER	\$51.00
SHOCK	\$126.00
SHOCK COVER	\$74.00
SHOCK SPRING	\$74.00
SIDE MOUNT LARGE	\$103.00
SISSY BAR LARGE	\$317.00
SISSY BAR SMALL	\$190.00
SPACER	\$28.00
SPEEDO & TACH CUP	\$51.00
SPEEDO & TACH HOUSE	\$74.00
SPOKE & NIPPLE	\$9.00
SPRING	\$28.00
SPRING LARGE	\$38.00
SPROCKET	\$153.00
SPROCKET BACKING PLATE	\$103.00
STABILIZER BAR	\$65.00
STARTER END	\$51.00
STARTER LID	\$65.00
STAY BAR	\$65.00
STRAP	\$19.00
SWING ARM	\$239.00
SWING ARM BOLT & NUT	\$47.00
SWING ARM SOFTAIL STYLE	\$737.00
SWITCH BRACKET	\$32.00
TACH DRIVE FITTING	\$32.00
TACH HOUSE	\$47.00
TACH PC	\$19.00
TAIL LIGHT HOUSE	\$74.00
TOP TREE	\$103.00
TRANS COVER	\$122.00
TRANS PLATE	\$38.00
TWEAK BAR	\$103.00
VELOCITY STACK	\$65.00
WASHER LARGE	\$9.00
WIRE COVER	\$32.00

**Yamaha 650, 750, 850, 1100 STARS**

ITEM	RETAIL
AIR SCOOP	\$153.00
AXLE	\$32.00
AXLE & NUT	\$47.00
AXLE STOP	\$19.00
BATTERY BOX	\$103.00
BRACKET	\$55.00
BRACKET LARGE	\$74.00
BRAKE ARM	\$38.00
BRAKE BACKING PLATE	\$103.00
BRAKE LINE	\$47.00
BRAKE PEDAL	\$74.00
BRAKE ROD	\$65.00
BREATHER COVER	\$103.00
BREATHER PLATE	\$55.00
BREATHER SCREEN	\$47.00
BREATHER VENT	\$32.00
CABLE HOLDER	\$19.00

ITEM	RETAIL
CALIPER	\$126.00
CALIPER MOUNT	\$74.00
CALIPER MOUNT FRONT	\$54.00
CAM CHAIN ADJUSTER	\$55.00
CAM COVER	\$190.00
CAM COVER LID	\$47.00
CAM PART	\$32.00
CARBURETOR ARM	\$32.00
CARBURETOR BACKING PLATE	\$89.00
CARBURETOR BOWL	\$47.00
CARBURETOR LEVER ALUMINUM	\$47.00
CARBURETOR LEVER STEEL	\$32.00
CARBURETOR TOP	\$38.00
CENTER STAND	\$190.00
CHAIN ADJUSTER BLOCK	\$38.00
CHAIN GUARD	\$103.00
CLAMP LARGE	\$55.00

*Yamaha 650, 750, 850, 1100 STARS, continued*

ITEM	RETAIL	ITEM	RETAIL
CLAMP SMALL	\$32.00	NIPPLE	\$4.00
COLLECTOR	\$239.00	OIL COVER PC	\$55.00
COUNTER SHAFT	\$51.00	OIL FILTER BOLT	\$19.00
COVER SMALL ALUM	\$51.00	OIL FILTER COVER	\$89.00
DIP STICK	\$19.00	OIL PC	\$32.00
DISC	\$153.00	PEDAL MOUNT	\$89.00
DYNO COVER	\$89.00	PET COCK	\$65.00
EXHAUST FLANGE	\$38.00	PET COCK FACE PLATE	\$12.00
EXHAUST PIPE (PER FOOT)	\$65.00	PET COCK LEVER	\$12.00
FENDER	\$239.00	PLUG	\$19.00
FENDER FRONT	\$239.00	POINT COVER	\$103.00
FENDER LARGE	\$317.00	POINT COVER SMALL	\$55.00
FENDER SMALL	\$190.00	PRIMARY	\$216.00
FOOTBOARD MOUNT	\$103.00	PRONG COVER	\$19.00
FOOTPEG	\$38.00	PULLEY REAR	\$190.00
FOOTPEG MOUNT	\$51.00	REAR CHAIN	\$153.00
FOOTPEG MOUNT LARGE	\$103.00	REAR DRIVE HOUSE	\$239.00
FOOTPEG MOUNT V-STAR	\$89.00	RISER	\$49.00
FORK BRACE 5 PC	\$103.00	RISER & CAP	\$72.00
FORK COVER	\$74.00	ROUND COVER	\$55.00
FORK TUBE SMALL	\$190.00	SEAT RAIL	\$153.00
FRONT FENDER	\$190.00	SHIFTER	\$51.00
GAS CAP	\$65.00	SHOCK	\$126.00
GAS TANK	\$477.00	SHOCK ADJUST	\$32.00
GAS TANK LARGE	\$632.00	SHOCK CLIP	\$28.00
GRAB RAIL	\$190.00	SHOCK COVER	\$55.00
HAND LEVER	\$38.00	SHOCK SPRING	\$74.00
HANDLEBAR	\$190.00	SHOCK WASHER	\$19.00
HANDLEBAR CLAMP	\$65.00	SIDE MOUNT	\$103.00
HANDLEBAR COVER	\$74.00	SISSY BAR	\$239.00
HANDLEBAR PART	\$32.00	SISSY BAR LARGE	\$317.00
HEADER PIPE 2 INTO 1	\$317.00	SPACER	\$28.00
HEADER PIPE 4 INTO 1	\$632.00	SPEEDO & TACH CUP	\$55.00
HEADLIGHT MOUNT	\$74.00	SPEEDO & TACH HOUSE	\$55.00
HEADLIGHT SHELL	\$89.00	SPEEDO DRIVE	\$51.00
HOSE HOLDER LARGE	\$49.00	SPOKE & NIPPLE	\$9.00
HOSE HOLDER MED	\$38.00	SPRING	\$32.00
HUB FRONT	\$153.00	SPROCKET	\$153.00
HUB REAR	\$190.00	SPROCKET BACKING PLATE	\$103.00
INNER EXHAUST FLANGE	\$32.00	STABILIZER BAR	\$65.00
INSPECTION PLATE	\$32.00	STARTER END	\$51.00
KICKER COVER	\$135.00	STARTER HOUSE	\$74.00
KICKER PEDAL	\$74.00	STAY BAR	\$65.00
KICKSTAND	\$74.00	STRAP	\$19.00
LEVER	\$28.00	SWING ARM	\$239.00
LONG BOLT	\$19.00	SWING ARM SOFTAIL STYLE	\$737.00
LOWER LEG	\$126.00	TACH PC	\$28.00
LOWER LEG V-S R-S	\$153.00	TAIL LIGHT HOUSE	\$74.00
LOWER TREE	\$135.00	TOOL BOX TOP	\$51.00
LOWER TREE R-S V-S R-S	\$165.00	TOP TREE	\$103.00
LUGGAGE RACK	\$239.00	TRANS COVER	\$122.00
LUGGAGE RACK LARGE	\$317.00	TRANS COVER 1100	\$103.00
MASTER CYLINDER	\$103.00	TRANS COVER 650	\$216.00
MASTER CYLINDER & TOP	\$122.00	TRANS COVER LARGE	\$216.00
MASTER CYLINDER SMALL	\$49.00	TRANS COVER SMALL	\$103.00
MASTER CYLINDER TOP	\$19.00	TRANS PLATE	\$32.00
MIRROR MOUNT	\$32.00	VELOCITY STACK	\$65.00
MOTOR MOUNT	\$55.00	WATER JACKET COVER	\$32.00
MOTOR MOUNT LARGE	\$103.00	YAMAHA COVER	\$103.00
MUFFLER BRACKET	\$89.00	YAMAHA COVER LARGE	\$173.00
MUFFLER TUBE	\$103.00	YAMAHA COVER SMALL	\$55.00
MULTI FITTING	\$47.00	YAMAHA PLATE	\$55.00



## Kawasaki 650-1300

ITEM	RETAIL	ITEM	RETAIL
4 INTO 1 HEADER	\$632.00	HUB FRONT	\$122.00
AXLE & NUT	\$47.00	HUB REAR	\$190.00
BATTERY BOX	\$103.00	HYDRAULIC LINE	\$55.00
BRACKET	\$47.00	INVERTED FORK LOWER	\$190.00
BRACKET LARGE	\$103.00	INVERTED FORK UPPER	\$190.00
BRAKE ARM	\$38.00	KAWASAKI COVER	\$55.00
BRAKE BACKING PLATE	\$126.00	KICKER COVER	\$135.00
BRAKE PEDAL	\$74.00	KICKER PC	\$38.00
BRAKE ROD	\$65.00	KICKER PEDAL 2 PC	\$74.00
BRAKE ROD NUT	\$19.00	KICKSTAND MOUNT	\$47.00
CABLE HOLDER	\$19.00	LOWER LEG	\$126.00
CALIPER	\$117.00	LOWER TREE	\$135.00
CALIPER 2 PC REAR	\$126.00	LUGGAGE RACK	\$239.00
CALIPER MOUNT	\$74.00	MASTER CYLINDER & TOP	\$122.00
CALIPER MOUNT LARGE	\$111.00	MASTER TOP	\$19.00
CAM COVER	\$190.00	MOTOR MOUNT	\$55.00
CAM COVER 1300	\$252.00	OIL FILTER	\$89.00
CAM END PART	\$32.00	OIL FILTER & BOLT	\$89.00
CARBURETOR ARM ALUM	\$38.00	OIL PAN	\$190.00
CARBURETOR ARM STEEL	\$28.00	OIL SIDE COVER	\$103.00
CARBURETOR BACKING PLATE	\$89.00	POINT BASE	\$89.00
CARBURETOR BOWL	\$47.00	POINT COVER	\$55.00
CARBURETOR TOP	\$38.00	PRIMARY COVER	\$216.00
CENTER STAND	\$190.00	RADIATOR SIDE PC	\$103.00
CHAIN ADJUSTER	\$47.00	REAR DRIVE HOUSE	\$239.00
CHAIN GUARD	\$103.00	SHIFTER	\$51.00
CHAIN PLATE	\$89.00	SHOCK	\$126.00
CLAMP SMALL	\$32.00	SHOCK CLIP	\$28.00
CLUTCH COVER LARGE	\$153.00	SHOCK SPRING	\$74.00
COTTER KEY	\$9.00	SHOCK TOP	\$32.00
CYLINDER	\$632.00	SPACER	\$28.00
DIP STICK	\$19.00	SPEEDO & TACH CUP	\$55.00
DISC	\$153.00	SPEEDO DRIVE	\$51.00
DUST COVER	\$28.00	SPRING	\$28.00
DYNO BASE	\$89.00	SPRING LARGE	\$38.00
DYNO COVER	\$103.00	SPROCKET	\$153.00
ELECTRICAL BOX	\$103.00	SPROCKET BACKING PLATE	\$103.00
EXHAUST FLANGE	\$38.00	STABILIZER BAR	\$65.00
FENDER	\$239.00	STARTER COVER	\$65.00
FENDER LARGE	\$317.00	STAY BAR	\$65.00
FENDER REAR	\$190.00	STRAP	\$19.00
FITTING LARGE	\$32.00	SWING ARM (STEEL)	\$239.00
FOOTPEG GUARD	\$43.00	SWING ARM ALUM (STOCK SIZE)	\$327.00
FOOTPEG MOUNT	\$59.00	SWING ARM BOLT & NUT	\$47.00
FOOTPEG MOUNT MED	\$89.00	SWING ARM STOCK ALUM W/BRAC	\$419.00
FOOTPEG MOUNT SMALL	\$28.00	SWING ARM W/BRAC EXT W/T	\$844.00
FOOTPEG SMALL	\$32.00	SWING ARM W/BRACE EXTENEDED	\$709.00
GAS CAP 3PC	\$101.00	TOP TREE	\$103.00
GAS TANK	\$477.00	TRANS COVER	\$107.00
GRAB RAIL	\$153.00	TRANS COVER 1300	\$107.00
GRAB RAIL SMALL	\$74.00	TRANS COVER 650	\$107.00
HAND LEVER	\$38.00	TRANS COVER 900-1000	\$107.00
HANDLEBAR	\$190.00	TRANS PLATE 1300	\$38.00
HANDLEBAR CLAMP	\$74.00	TRANS PLATE 550	\$32.00
HANDLEBAR END CAP	\$32.00	TRANS PLATE 650	\$32.00
HANDLEBAR END CAP	\$19.00	TRANS PLATE 900-1000	\$38.00
HANDLEBAR PART	\$32.00	TREE NUT	\$19.00
HEADLIGHT RIM	\$65.00	VENT PIECE	\$55.00
HEADLIGHT SHELL	\$89.00		



## BMW, BSA, Norton, Triumph

ITEM	RETAIL	ITEM	RETAIL
AXLE & NUT	\$47.00	HAND LEVER PART	\$32.00
AXLE NUT	\$12.00	HANDLE	\$74.00
BATTERY BOX	\$103.00	HANDLEBAR PART	\$32.00
BELT COVER	\$117.00	HEAD	\$239.00
BRACKET	\$32.00	HEADLIGHT	\$89.00
BRACKET LARGE	\$103.00	HEADLIGHT MOUNT	\$103.00
BRAKE ARM	\$38.00	HEADLIGHT RING	\$65.00
BRAKE BACKING PLATE	\$103.00	HEADLIGHT SHELL	\$89.00
BRAKE DRUM	\$153.00	HEAT GUARD	\$89.00
BRAKE DRUM FRONT	\$190.00	HOLD DOWN	\$12.00
BRAKE DRUM REAR	\$190.00	HORN BRACKET	\$32.00
BRAKE PEDAL	\$74.00	HORN COVER	\$47.00
BRAKE ROD	\$65.00	HUB	\$100.00
BRAKE ROD NUT	\$19.00	HUB REAR	\$100.00
BREATHER BACKING PLATE	\$70.00	HUB FRONT	\$103.00
CABLE HOLDER	\$19.00	HYDRO LINE	\$55.00
CALIPER 2 PC	\$117.00	INNER TRANS COVER	\$122.00
CAM CHAIN ADJUSTER	\$55.00	INSPECTION PLATE	\$38.00
CAM COVER BSA-NORTON	\$153.00	JUG	\$239.00
CAM COVER TRIUMPH	\$122.00	KICKER BOLT	\$32.00
CAM PART	\$32.00	KICKER PEDAL	\$74.00
CAP	\$19.00	KICKER PEDAL BOLT	\$32.00
CARBURETOR ARM ALUM	\$38.00	KICKER PEDAL PAD 2 PC	\$47.00
CARBURETOR BACKING PLATE	\$89.00	KICKSTAND	\$74.00
CARBURETOR BODY	\$190.00	LINKAGE & END	\$55.00
CARBURETOR BOWL	\$47.00	LOWER LEG	\$126.00
CARBURETOR CLIP	\$19.00	LOWER LEG BRACKET	\$32.00
CARBURETOR FITTING	\$19.00	LOWER TREE	\$135.00
CARBURETOR TOP	\$32.00	LUGGAGE RACK	\$239.00
CENTER STAND	\$190.00	LUGGAGE RACK LARGE	\$317.00
CHAIN	\$153.00	MAGNETO BODY	\$103.00
CHAIN ADJUST	\$28.00	MANIFOLD	\$89.00
CHAIN ADJUST END PLATE	\$19.00	MANIFOLD SMALL	\$55.00
CHAIN GUARD	\$103.00	MASTER ADJUST & END	\$38.00
CHOKE LEVER	\$19.00	MASTER CYLINDER	\$103.00
CLAMP	\$38.00	MASTER CYLINDER & TOP	\$122.00
CLAMP LARGE	\$55.00	MOTOR MOUNT	\$74.00
COIL BRACKET	\$55.00	MOTOR MOUNT LARGE	\$103.00
COIL CLAMP	\$28.00	NORTON EMBLEM LARGE	\$103.00
COLLECTOR	\$239.00	OIL CAP	\$32.00
COUNTER SHAFT	\$55.00	OIL MANIFOLD	\$74.00
COVER LARGE	\$74.00	OIL TANK	\$239.00
COVER SMALL	\$55.00	PET COCK	\$65.00
CRASH BAR	\$190.00	PLUG LARGE	\$19.00
CRASH BAR LARGE	\$397.00	POINT COVER	\$47.00
DISC	\$153.00	POT PLUG	\$19.00
DUST COVER LARGE	\$38.00	PRIMARY FINNED	\$239.00
ELECTRICAL BOX	\$190.00	PRIMARY COVER	\$216.00
ELECTRICAL BOX 2 PC	\$190.00	RISER	\$47.00
EMBLEM LARGE	\$103.00	RISER LARGE	\$74.00
EXHAUST FLANGE	\$74.00	RISER & CAP	\$74.00
EXHAUST PIPE (PER FOOT)	\$65.00	ROCKER ARM	\$74.00
FENDER FRONT	\$252.00	ROCKER BOX	\$126.00
FENDER LARGE	\$379.00	ROCKER COVER	\$38.00
FENDER BRACE	\$117.00	ROD LARGE	\$65.00
FINNED COVER	\$74.00	SEAT RAIL	\$190.00
FITTING LARGE	\$19.00	SET OF HANDLEBARS	\$190.00
FOOTBOARD	\$103.00	SHIFTER	\$51.00
FOOTPEG	\$55.00	SHIFTER LARGE	\$103.00
FOOTPEG LARGE	\$74.00	SHOCK	\$126.00
FOOTPEG & PLATE	\$135.00	SHOCK ADJUSTER	\$32.00
FOOTPEG MOUNT	\$32.00	SHOCK CLIP	\$19.00
FOOTPEG MOUNT LARGE	\$74.00	SHOCK COVER	\$74.00
FORK TUBE	\$190.00	SHOCK SPRING	\$74.00
GAS TANK	\$477.00	SIDE COVER	\$135.00
GAS TANK LARGE	\$632.00	SISSY BAR	\$239.00
HALF CLAMP	\$19.00	SISSY BAR LARGE	\$317.00
HAND LEVER	\$38.00	SPACER	\$19.00
HAND LEVER 2 PC	\$65.00	SPEEDO & TACH CUP	\$55.00
HAND LEVER 5 PC	\$103.00	SPEEDO & TACH HOUSE	\$55.00

*BMW, BSA, Norton, Triumph, continued*

ITEM	RETAIL
SPEEDO DRIVE	\$65.00
SPEEDO MOUNT	\$55.00
SPOKE & NIPPLE	\$9.00
SPRING	\$28.00
SPRING LARGE	\$47.00
SPRINGER	\$711.00
SPROCKET	\$153.00
STABILIZER BAR	\$65.00
STRAP	\$19.00
SWING ARM	\$239.00
TACH HOUSE	\$55.00
TAIL LIGHT BRACKET	\$74.00
TAIL LIGHT HOUSE	\$74.00

ITEM	RETAIL
THROTTLE PIECE	\$19.00
TOP MOTOR MOUNT	\$74.00
TOP TREE	\$103.00
TRANS BACKING PLATE	\$122.00
TRANS CASE	\$207.00
TRANS COVER	\$153.00
TREE NUT	\$19.00
TRIUMPH EMBLEM	\$74.00
TWEAK BAR	\$103.00
VALVE COVER	\$153.00
VALVE GUIDE PC	\$32.00
VELOCITY STACK	\$65.00
WHEEL ADJUSTER	\$19.00

**Polaris/Victory Parts**

ITEM	RETAIL
AXLE	\$32.00
AXLE & NUT	\$47.00
AXLE END CAP CUSTOM	\$20.00
AXLE NUT	\$12.00
BAR	\$69.00
BAR SMALL	\$34.00
BATTERY BASE PLATE	\$51.00
BATTERY SIDE COVER	\$103.00
BELT GUARD	\$135.00
BELT GUARD	\$135.00
BLINKER HOUSE	\$55.00
BOLT	\$12.00
BRACKET	\$20.00
BRACKET LARGE	\$74.00
BRACKET SMALL	\$28.00
BRAKE ARM	\$27.00
BRAKE BACKING PLATE	\$43.00
BRAKE PEDAL	\$34.00
BRAKE PEDAL	\$74.00
BRAKE ROD NUT	\$9.00
CABLE ADJUST 2 PCS.	\$9.00
CALIPER	\$126.00
CAM COVER	\$74.00
CAP	\$11.00
CHAIN ADJUSTER END PLATE	\$9.00
CLAMP	\$47.00
COVER	\$34.00
COVER LARGE	\$51.00
CYLINDER	\$239.00
DISC FLOATING	\$194.00
DUST COVER	\$18.00
DUST COVER LARGE	\$18.00
EXHAUST PIPE (PER FOOT)	\$65.00
FENDER BRACE	\$43.00
FENDER FRONT	\$190.00
FENDER REAR	\$317.00
FOOTPEG	\$31.00
FOOTPEG	\$49.00
FOOTPEG MOUNT LARGE	\$103.00
FOOTPEG MOUNT MED	\$54.00
FOOTPEG MOUNT SMALL	\$23.00
FORK COVER SMALL	\$38.00
FORK TUBE PLUG	\$19.00
FRAME RAIL	\$153.00
GAS CAP	\$49.00

ITEM	RETAIL
GAS TANK	\$556.00
HALF CLAMP	\$11.00
HAND LEVER	\$38.00
HANDLEBAR	\$190.00
HANDLEBAR PART	\$32.00
HANDLEBAR SMALL	\$153.00
HEAD	\$239.00
HEADLIGHT LATCH	\$14.00
HEADLIGHT MOUNT	\$65.00
HEADLIGHT RIM	\$54.00
HEADLIGHT SHELL	\$101.00
HEAT GUARD	\$34.00
HEATGAURD	\$74.00
HEATGUARD LARGE	\$112.00
HEATGUARD SMALL	\$54.00
LEVER	\$38.00
LOWER LEG	\$153.00
LOWER TREE	\$165.00
MASTER CYLINDER	\$103.00
MASTER CYLINDER & TOP	\$122.00
MOTOR COVER	\$89.00
MOTOR COVER	\$74.00
MOUNT	\$49.00
MOUNT LARGE	\$69.00
MOUNT LARGE	\$153.00
MOUNT MED	\$54.00
MUFFLER	\$190.00
NUT	\$7.00
OIL CAP	\$27.00
OIL COOLER	\$103.00
OIL PAN ALUM	\$215.00
PLUG	\$9.00
PLUG LARGE	\$20.00
PRIMARY COVER	\$216.00
PRIMARY COVER RING	\$51.00
PULLEY REAR	\$190.00
RING LARGE	\$27.00
ROD	\$18.00
SIDE RAIL	\$153.00
SPACER SMALL	\$12.00
STRAP ALUM	\$19.00
SWING ARM 2PC VICTORY	\$737.00
TAIL LIGHT HOUSE	\$82.00
TOP TREE	\$135.00



Available in Small - 4 XL

Suggested Retail...\$14.99

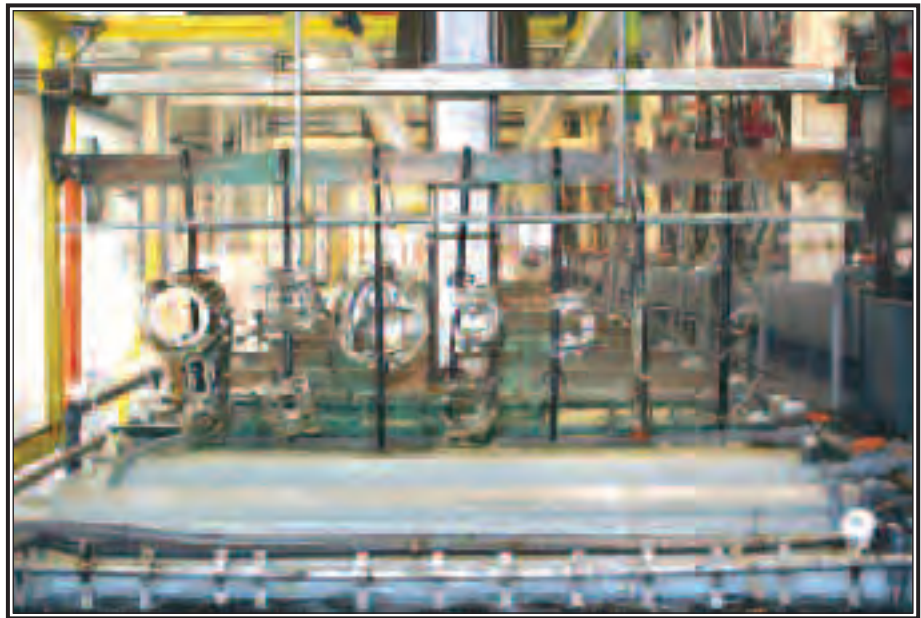






**Dedicated highly trained employees for professional results that you can count on.**





## **Automated Plating**

**State of the art  
process control  
for superior  
results**



*Before*



*After*

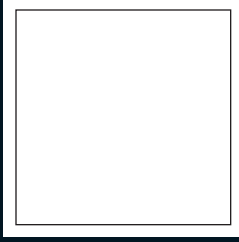








1010 Krebs Station Road  
Paducah, KY 42003



**Mail To:**

